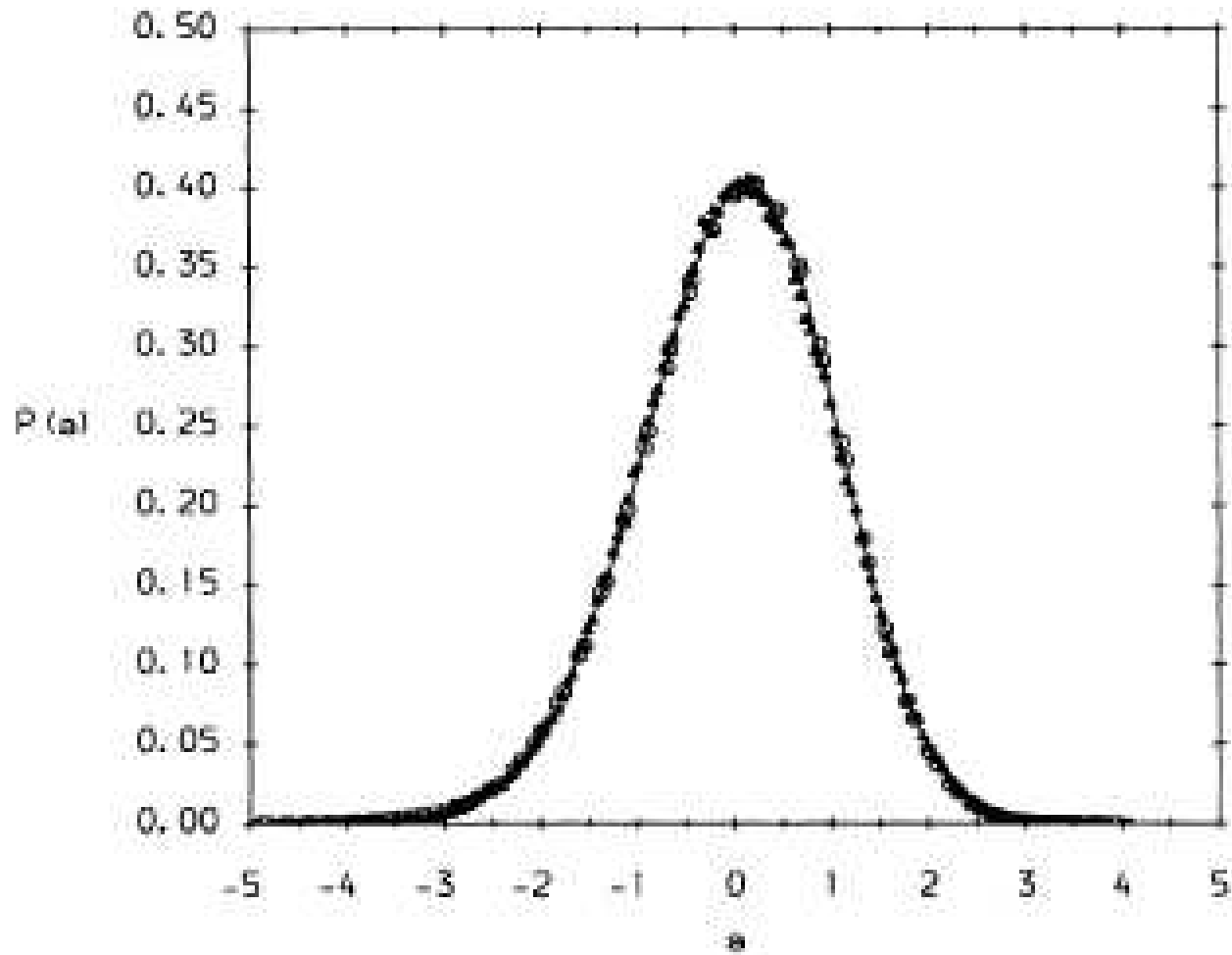


First observations of TW distributions

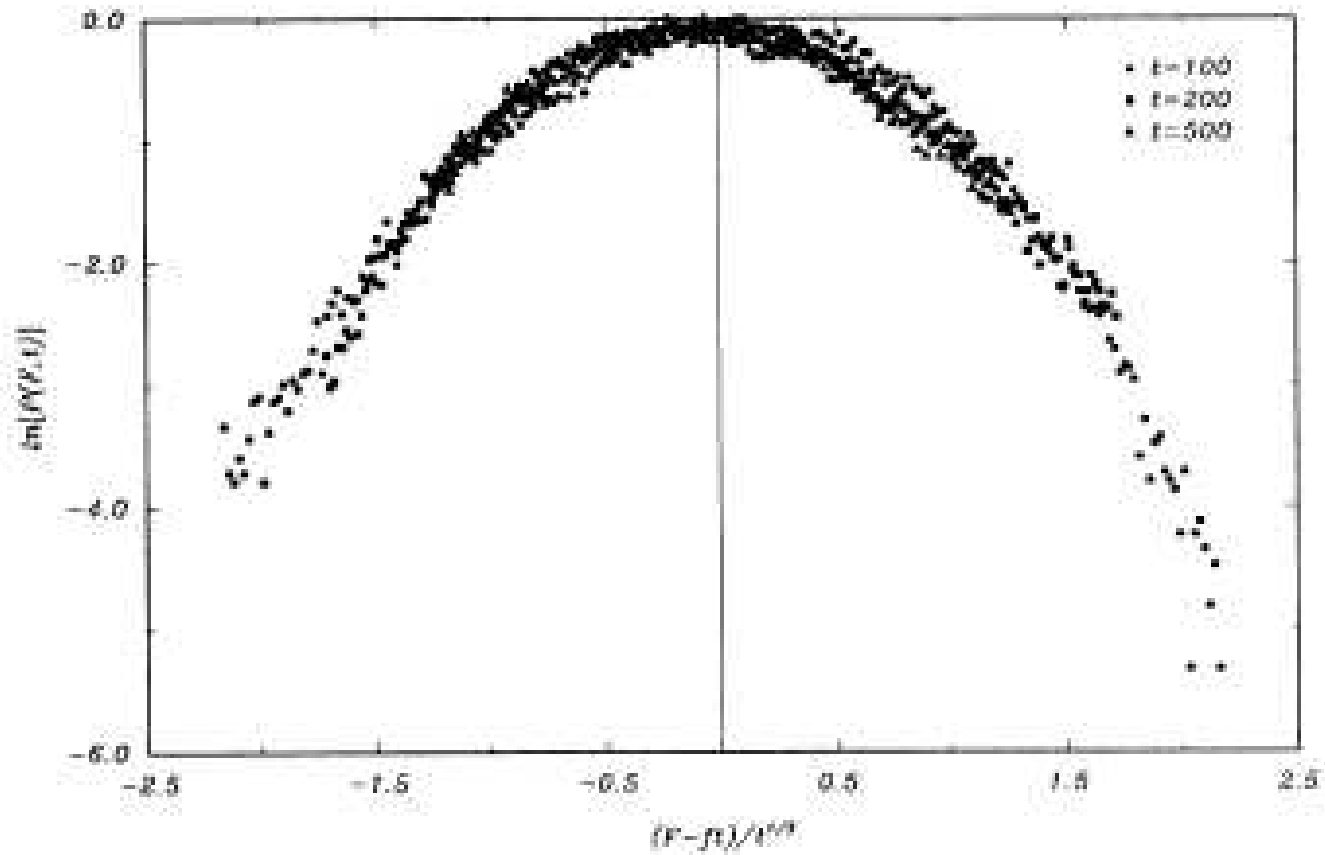
RSOS growth models and directed polymers at $T = 0$

J.M. Kim, M.A. Moore and A.J. Bray, Phys. Rev. A **44** (1991) 2345



Directed polymers at finite T

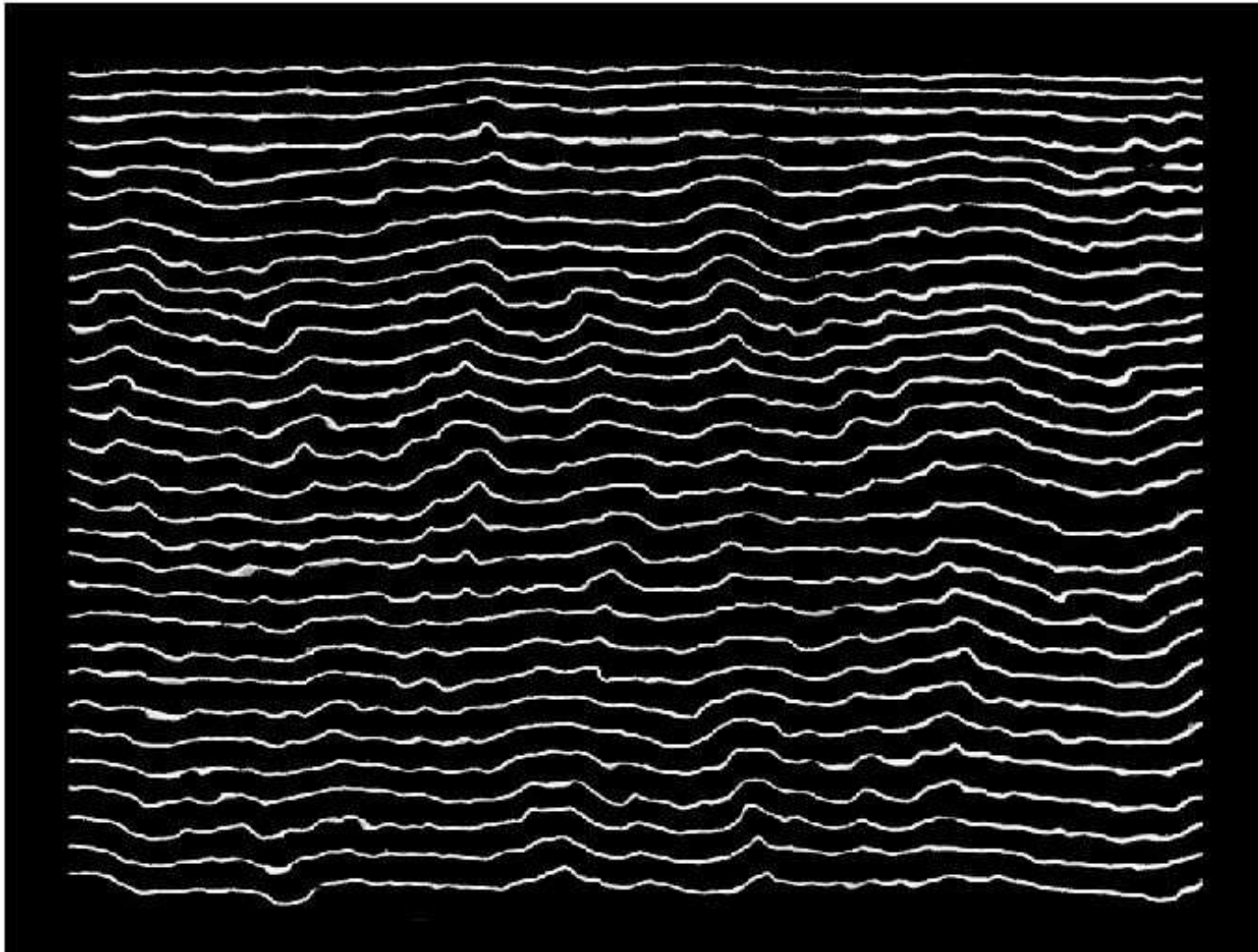
T. Halpin-Healy, Phys. Rev. A **44** (1991) R3415



KPZ universality in experiments

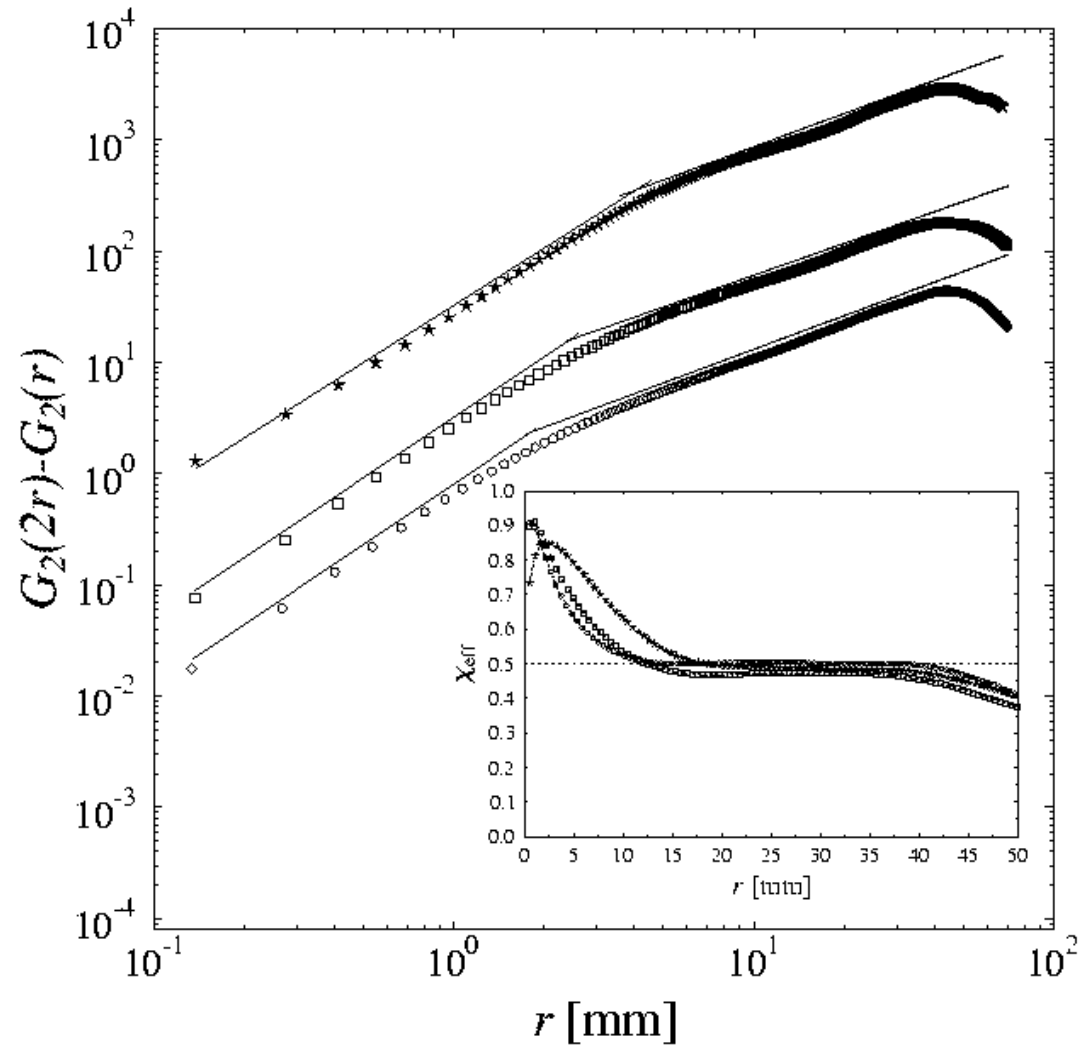
Slow combustion of paper

M. Myllys et al., Phys. Rev. E **64** (2001) 036101



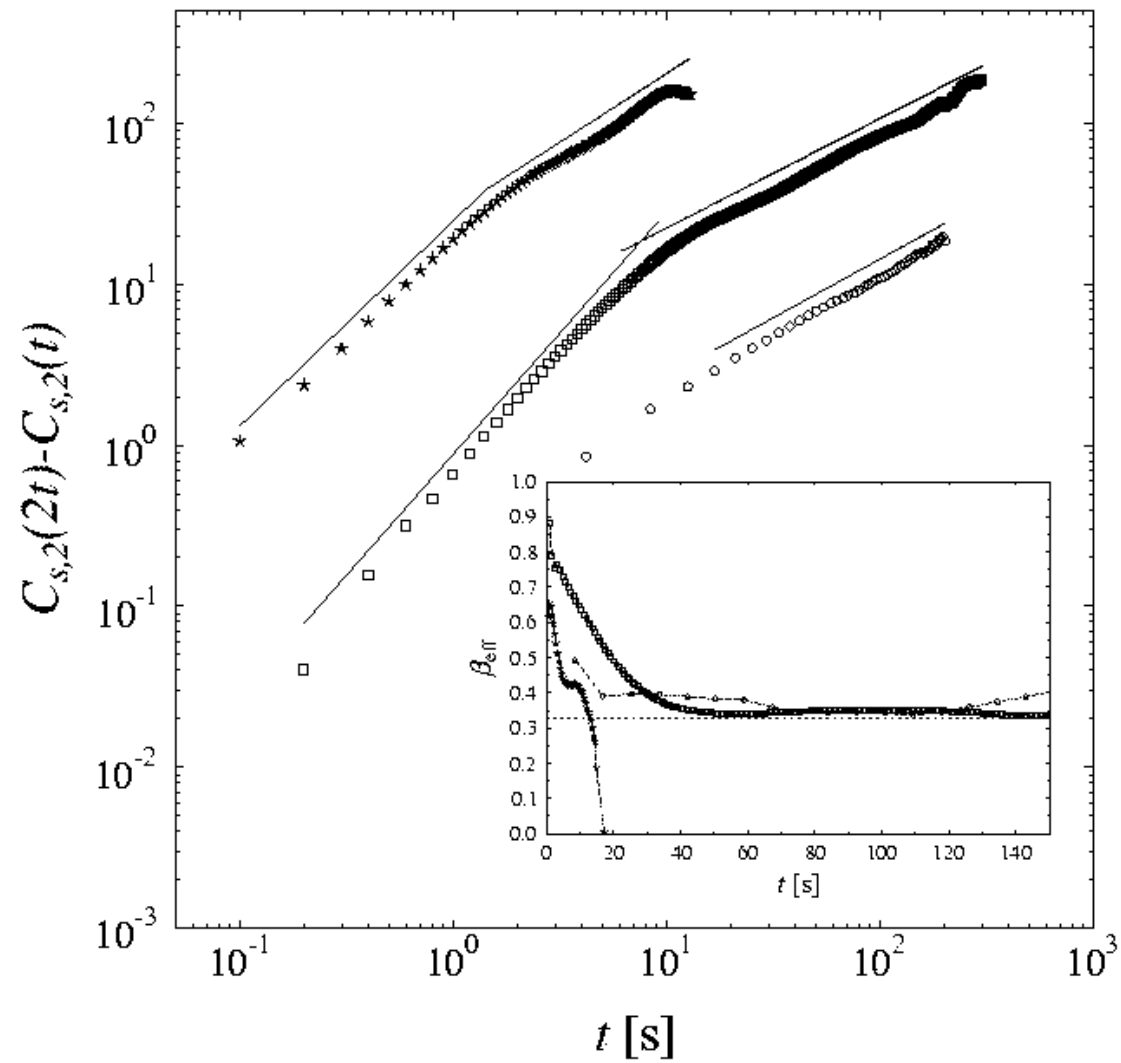
Slow combustion of paper: Estimate of α

M. Myllys et al., Phys. Rev. E **64** (2001) 036101



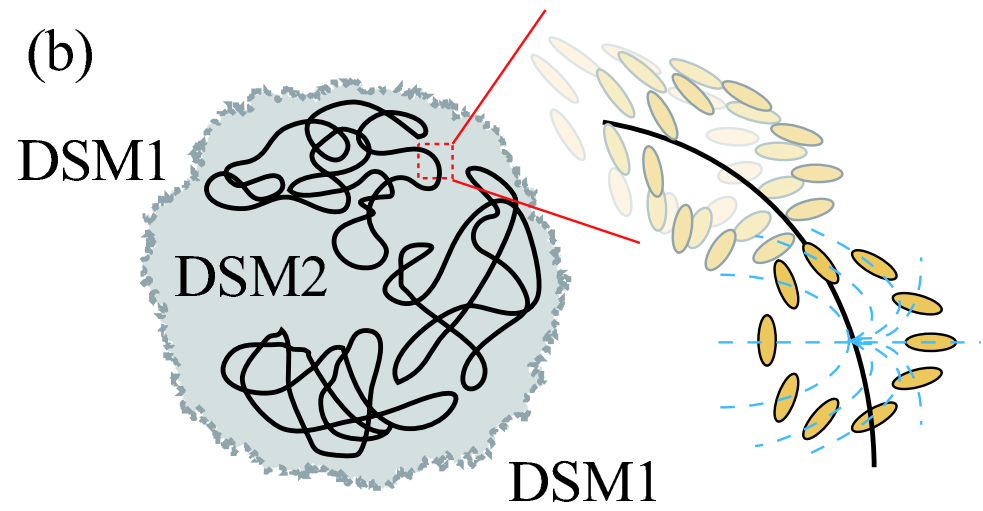
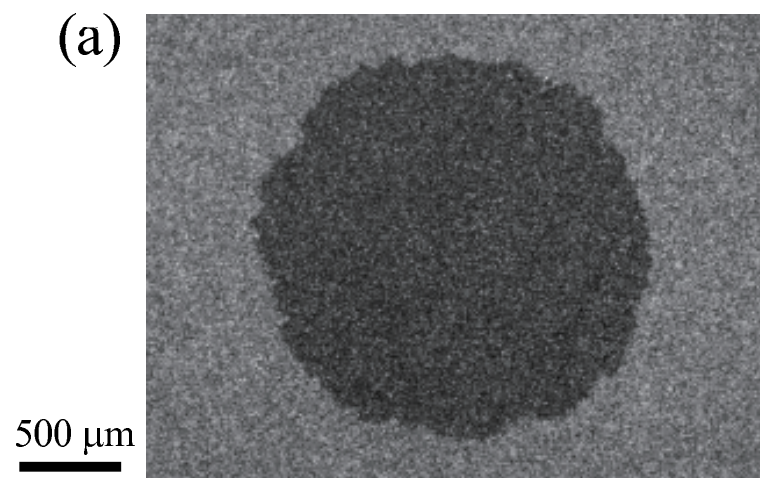
Slow combustion of paper: Estimate of β

M. Myllys et al., Phys. Rev. E **64** (2001) 036101



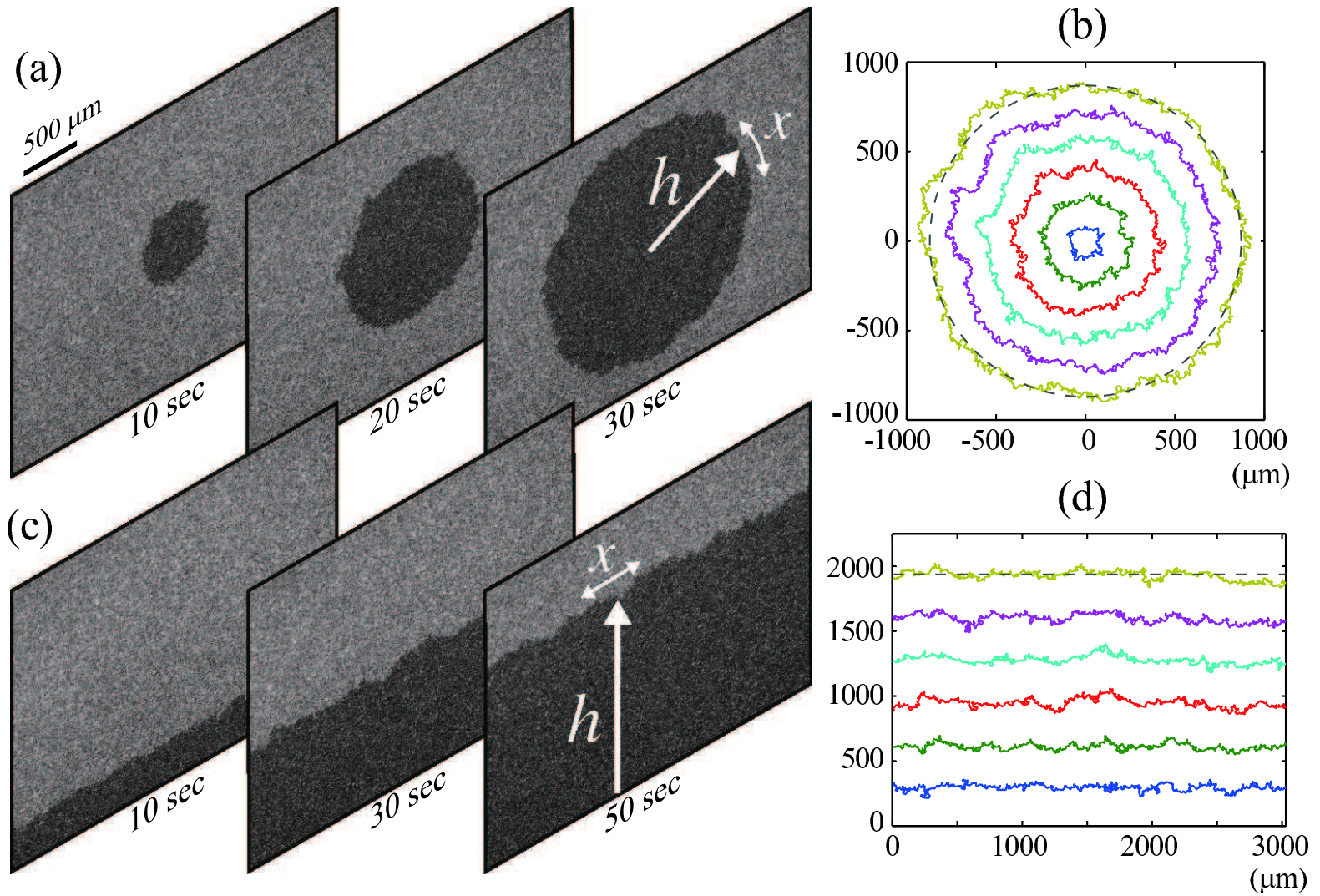
Liquid crystal phases

K.A. Takeuchi and M. Sano, J. Stat. Phys. (2012)



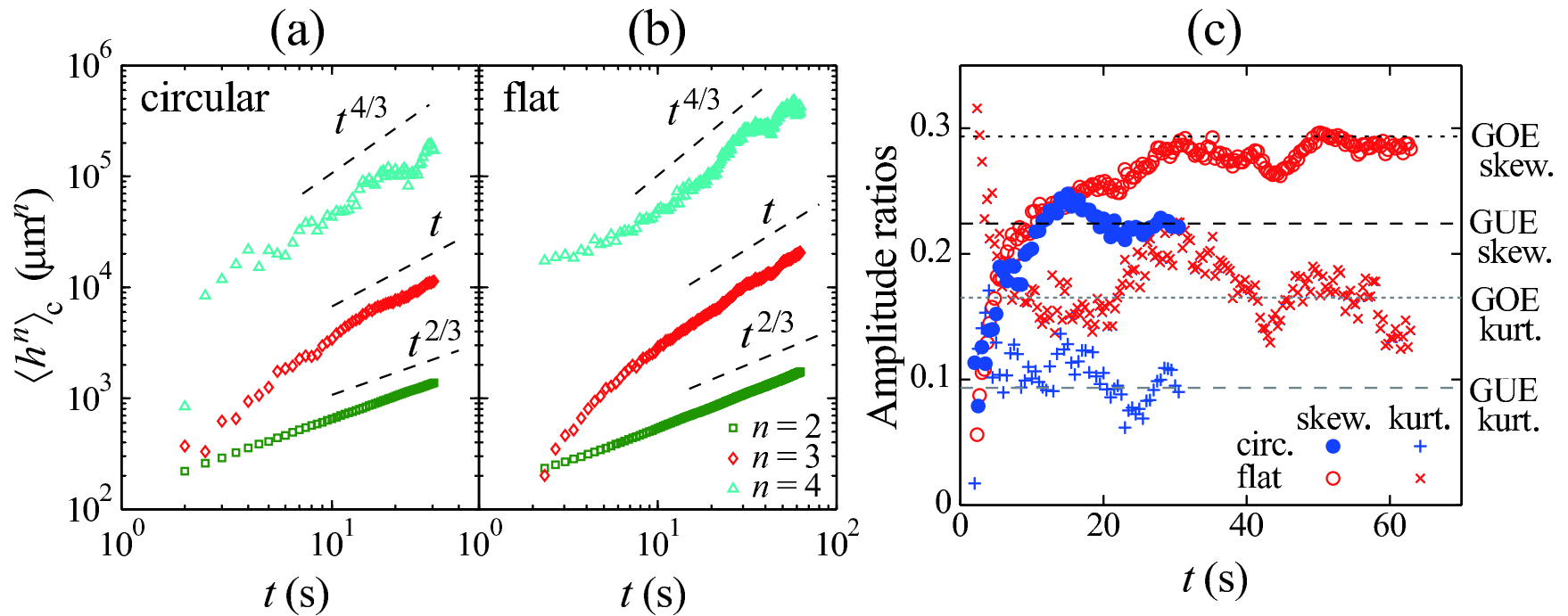
Experimental setup

K.A. Takeuchi and M. Sano, J. Stat. Phys. (2012)



Cumulants

K.A. Takeuchi and M. Sano, J. Stat. Phys. (2012)



GUE prediction: skewness 0.2241..., kurtosis 0.09345...

GOE prediction: skewness 0.2935..., kurtosis 0.1652....

Distributions

K.A. Takeuchi and M. Sano, J. Stat. Phys. (2012)

