

Zooming in on local level statistics by supersymmetric extension of free probability

S Mandt and M R Zirnbauer

Institut für Theoretische Physik, Universität zu Köln, Zùlpicher Straße 77, 50937 Köln, Germany

E-mail: zirnbauer@uni-koeln.de

Received 27 August 2009, in final form 8 November 2009

Published 10 December 2009

Online at stacks.iop.org/JPhysA/43/025201

Abstract

We consider unitary ensembles of Hermitian $N \times N$ matrices governed by a confining potential NV with analytic and uniformly convex V . From earlier work it is known that the large- N limit of the characteristic function for a finite-rank Fourier variable K is determined by the Voiculescu R -transform, a key object in free probability theory. Going beyond these results, we argue that the same holds true when the finite-rank operator K has the form that is required by the Wegner–Efetov supersymmetry method. This insight leads to a potent new technique for the study of local statistics, e.g. level correlations. We illustrate the new technique by demonstrating universality in a random matrix model of stochastic scattering.

PACS numbers: 02.30.Fn, 02.50.Cw, 03.65.Nk, 05.30.Ch

1. Introduction

The notions of ‘free probability’ and ‘freeness’ of non-commutative random variables were introduced by Voiculescu in the study of certain algebras of bounded operators [25]. The word freeness in this context means a kind of statistical independence of operators. The algebraic concept of freeness of random variables has a natural realization by random matrices in the limit of infinite matrix dimension [24]; this realization is what we study, develop and apply in the present paper.

A central tool of the free probability formalism is the so-called R -transform, which resembles the logarithm of the characteristic function for commutative random variables. Voiculescu [23] defined it by the functional inverse of the average trace of the resolvent operator. A second approach to the subject is due to Speicher [19], who expressed the moments of the random matrix directly in terms of the Taylor coefficients of the R -transform. Speicher’s concept of non-crossing partition is a mathematical expression of the dominance of planar Feynman graphs (using physics parlance) in the large- N limit. In the present paper,

we will encounter both approaches: the analytical one of Voiculescu and the combinatorial one of Speicher.

Our long-term goal is a comprehensive description of the spectral correlation functions and, ultimately, a proof of the universality hypothesis which is expected for certain random matrix ensembles in the large- N limit. Although the R -transform is a powerful tool to tackle density-of-states questions, it is fair to say that free probability theory has not yet contributed much to our understanding of the universality of spectral correlation functions at the scale of the level spacing.

Bearing this in mind, we now change subject and turn to the so-called supersymmetry method, by which we mean the technique of integration over commuting and anti-commuting variables pioneered by Wegner [26] and Efetov [10]. In its original formulation (using the Hubbard–Stratonovich transformation), this method was limited to Gaussian disorder distributions. Nonetheless, with this limitation it has enjoyed great success in producing non-trivial results for a number of physics problems, e.g. level statistics of small metallic grains, localization in thick disordered wires, scaling exponents at the Anderson transition, etc. In the present paper, we will take advantage of a recent variant, called superbosonization, which makes it possible in principle to treat a class of disorder distributions much wider than the Gaussian one.

Since their inception in the 1980s, free probability theory and the supersymmetry method have coexisted with little or no mutual interaction. Forecast in a prescient remark by Zinn-Justin [30], the message of the present paper is that a new quality emerges when the two formalisms are combined. More specifically, we will show that the characteristic function of the probability law of the random matrix ensemble—an object of central importance to superbosonization—has a large- N limit which is determined by the R -transform. This result paves the way for a number of applications. As a first application, we will illustrate the new method by demonstrating universality for a random matrix model of stochastic scattering.

1.1. Summary of results

Our results make reference to the R -transform, which we now introduce in more detail. Consider the average trace of the resolvent operator, $g(z) := \lim_{N \rightarrow \infty} N^{-1} \langle \text{Tr}(z - H)^{-1} \rangle$, $z \in \mathbb{C} \setminus \mathbb{R}$, of the random matrix H . Voiculescu inverts the function $z \mapsto g(z)$ to define the R -transform as the regular part of $g(z) = k \mapsto k^{-1} + R(k) = z$. It has a power series $R(k) = \sum_{n \geq 1} c_n k^{n-1}$ whose coefficients c_n are called free cumulants. These are analogs (in the non-commutative setting) of the usual cumulants in that they are linear with respect to free convolution.

In the present paper, we consider U_N -invariant probability measures μ_N with a density of the form

$$d\mu_N(H) := e^{-N \text{Tr } V(H)} dH, \quad (1.1)$$

where dH denotes Lebesgue measure on the linear space of Hermitian $N \times N$ matrices, and $\mathbb{R} \ni x \mapsto V(x)$ is analytic and uniformly convex. The focus of our analysis is the characteristic function

$$\Omega(K) = \int e^{\text{Tr } HK} d\mu_N(H). \quad (1.2)$$

Note that $\Omega(K)$ is invariant under conjugation $K \mapsto g^{-1} K g$ by $g \in \text{GL}_N$.

Motivated by the supersymmetry method as reviewed in section 2, we make a study of $\Omega(NK)$ for linear operators K of the form

$$K = \sum_{a=1}^p \varphi_a \otimes \tilde{\varphi}_a + \sum_{b=1}^q \psi_b \otimes \tilde{\psi}_b, \quad (1.3)$$

with p, q kept fixed in the limit $N \rightarrow \infty$. Here, $\varphi_a, \psi_b \in \mathbb{C}^N$ are vectors, while $\tilde{\varphi}_a, \tilde{\psi}_b \in (\mathbb{C}^N)^*$ are co-vectors. The components of $\tilde{\varphi}_a$ are complex commuting variables or generators of the symmetric algebra $S(\mathbb{C}^N)$, whereas the components of $\tilde{\psi}_b$ are complex anti-commuting variables or generators of the exterior algebra $\wedge(\mathbb{C}^N)$. All inner products $\langle \tilde{\varphi}_a, \varphi_b \rangle$ for $a, b = 1, \dots, p$ are kept fixed in the large- N limit.

For such K , we argue that the following holds:

$$\lim_{N \rightarrow \infty} N^{-1} \ln \Omega(NK) = \sum_{n=1}^{\infty} \frac{c_n}{n} \text{Tr } K^n. \quad (1.4)$$

We note that this formula makes perfect sense as long as the power series of the R -transform has infinite radius of convergence. The latter property is ensured by our assumptions on V .

1.1.1. Related mathematical work. To put the result (1.4) into context, we now mention related mathematical work on the large- N asymptotics of the following spherical integral (known in the physics literature as the Itzykson–Zuber integral):

$$I_{X_N}(k) = \int_{U_N} e^{k \text{Tr}(X_N g \Pi g^{-1})} dg, \quad (1.5)$$

for the case of a rank-1 projector Π . Let the eigenvalues $x_{1,N}, \dots, x_{N,N}$ of the Hermitian matrices X_N be confined to a *finite* interval $[a, b]$ and assume that the empirical measure $N^{-1} \sum_j \delta(x - x_{j,N})$ converges weakly to a measure with support in $[a, b]$. Under these conditions, the following is known.

Collins [6] differentiates the scaled logarithm of the spherical integral n times at zero to show that

$$\lim_{N \rightarrow \infty} N^{-1} \frac{d^n}{dk^n} \ln I_{X_N}(Nk) \Big|_{k=0} = (n-1)! c_n, \quad (1.6)$$

i.e. he establishes convergence to the n th free cumulant (times a factorial). A stronger version of this result,

$$\lim_{N \rightarrow \infty} N^{-1} \ln I_{X_N}(Nk) = \int_0^k R(k') dk' = \sum_{n=1}^{\infty} \frac{c_n}{n} k^n, \quad (1.7)$$

was proved by Guionnet and Maida [15] under the condition that $k \in \mathbb{C}$ is small enough. (Note that (1.7) implies (1.6).) For k real and large, however, the authors of [15] obtain a *different* behavior, separated from the small- k regime by a phase transition.

These results have a bearing on (1.4) for $p = 1, q = 0$ because the integral (1.2) can be done in two steps: fixing some set of eigenvalues for H we first do the integral over U_N orbits—that is precisely the spherical integral (1.5)—and afterwards we take the average over the fluctuating eigenvalues. While it may seem puzzling at first sight that the authors of [15] find a phase transition whereas we do not, section 3.6 explains that there is no contradiction here. The assumption of eigenvalues strictly confined to an interval $[a, b]$ would mean in our context that the confining potential $V(x)$ is infinitely high outside of $[a, b]$. In contradistinction, we assume that V is both uniformly convex and analytic. In the latter setting, the existence of a phase transition is ruled out on physical and mathematical grounds. We in fact argue that the limit in (1.7) is an entire function of $k \in \mathbb{C}$.

1.1.2. Toward applications. By the general principles of invariant theory, the characteristic function $\Omega(K) = \Omega(g^{-1}Kg)$ ($g \in \mathrm{GL}_N$) lifts to a function $\widehat{\Omega}(Q)$ of the supermatrix of GL_N -invariants

$$Q = \begin{pmatrix} \langle \widetilde{\varphi}_a, \varphi_{a'} \rangle & \langle \widetilde{\varphi}_a, \psi_{b'} \rangle \\ \langle \widetilde{\psi}_b, \varphi_{a'} \rangle & \langle \widetilde{\psi}_b, \psi_{b'} \rangle \end{pmatrix}_{a, a'=1, \dots, p; b, b'=1, \dots, q}. \quad (1.8)$$

The angular brackets still mean contraction of the vector with the co-vector. By the relation $\mathrm{Tr} K^n = \mathrm{STr} Q^n$ (where STr denotes the supertrace), it follows from (1.4) that

$$\lim_{N \rightarrow \infty} N^{-1} \ln \widehat{\Omega}(NQ) = \sum_{n=1}^{\infty} \frac{c_n}{n} \mathrm{STr} Q^n. \quad (1.9)$$

The lifted function $\widehat{\Omega}$ is input required by the superbosonization method (section 2); in the past, this input was the link missing for applications. With (1.9) established, we now have at our disposal a powerful new method for the treatment of random matrix problems. In the present paper, we illustrate the new method by demonstrating universality for a random matrix model of stochastic scattering. In particular, we point out that the pertinent large- N saddle-point equation for Q is Voiculescu's equation $k^{-1} + R(k) = z$ generalized to the (super-)matrix case:

$$Q^{-1} + R(Q) = z \mathrm{Id}_{p|q}. \quad (1.10)$$

While the present paper addresses only the case of unitary symmetry, our treatment is robust and readily extends to ensembles with orthogonal or symplectic symmetry.

1.2. Outline

An outline of the contents of the paper is as follows. Section 2 provides background and motivation by introducing the characteristic function $\Omega(K)$ as a key object of the supersymmetry method. For the special case of $K = \varphi \otimes \widetilde{\varphi} = k\Pi$ with $k \in \mathbb{R}$ and Π a rank-1 projector, the large- N asymptotics of $\Omega(NK)$ is computed in section 3 using Dyson Coulomb gas methods. Particular attention is paid to the fact that the asymptotics for small and large k match perfectly to give an answer which is smooth as a function of k . The fermionic analog $K = \psi \otimes \widetilde{\psi}$ with anti-commuting $\psi, \widetilde{\psi}$ is treated by drawing on information from representation theory in section 4. By using standard perturbation theory in the large- N limit, we then develop in section 5 a combinatorial description of the full superfunction $\Omega(NK)$. The resulting formalism is applied to a model of stochastic scattering in section 6. An outlook is given in section 7.

2. Review: supersymmetry method

We begin the paper with a concise review of the supersymmetry method and, in particular, of superbosonization. In this way, we shall introduce and motivate the Fourier transform $\Omega(K) = \int e^{\mathrm{Tr} HK} d\mu_N(H)$ with K given by (1.3), which is a superfunction with symmetries and the key object to be analyzed in the following.

2.1. First steps

Consider the Hermitian vector space \mathbb{C}^N with its standard Hermitian scalar product $h: \mathbb{C}^N \times \mathbb{C}^N \rightarrow \mathbb{C}$, which determines a \mathbb{C} -antilinear bijection

$$\dagger: \mathbb{C}^N \rightarrow (\mathbb{C}^N)^*, \quad v \mapsto v^\dagger := h(v, \cdot), \quad (2.1)$$

between \mathbb{C}^N and its dual vector space $(\mathbb{C}^N)^*$. Following standard physics conventions, we denote by the same symbol (dagger) the operation $L \mapsto L^\dagger$ of taking the Hermitian conjugate of a linear operator $L \in \text{End}(\mathbb{C}^N)$.

In the following, the Hamiltonian H will always be a random Hermitian operator:

$$\text{End}(\mathbb{C}^N) \ni H = H^\dagger, \quad (2.2)$$

distributed according to some probability measure μ_N . Our goal is to study the spectral correlation functions which are defined as averages with respect to μ_N . For this purpose, we consider the characteristic polynomial $z \mapsto \text{Det}(z - H)$ associated with H . The supersymmetry method allows us to compute expectations of products of ratios of such polynomials, and hence of products of resolvent traces $\prod_a \text{Tr}(z_a - H)^{-1}$, as follows.

Let us denote the canonical pairing $(\mathbb{C}^N)^* \otimes \mathbb{C}^N \rightarrow \mathbb{C}$ (i.e. evaluation of a linear form $\tilde{\varphi} \in (\mathbb{C}^N)^*$ on a vector $\varphi \in \mathbb{C}^N$) by

$$\tilde{\varphi} \otimes \varphi \mapsto \langle \tilde{\varphi}, \varphi \rangle. \quad (2.3)$$

With the resolvent operator $(z - H)^{-1}$ for $z \in \mathbb{C} \setminus \mathbb{R}$, we associate a holomorphic function $\gamma : (\mathbb{C}^N)^* \times \mathbb{C}^N \rightarrow \mathbb{C}$ by

$$\gamma(\tilde{\varphi}, \varphi) = e^{-\langle \tilde{\varphi}, \varphi z - H \varphi \rangle}. \quad (2.4)$$

Now let $V_{\mathbb{R}}^z \subset (\mathbb{C}^N)^* \times \mathbb{C}^N$ be the graph of the \mathbb{R} -linear mapping

$$\mathbb{C}^N \rightarrow (\mathbb{C}^N)^*, \quad \varphi \mapsto -is\varphi^\dagger, \quad s := \text{sign}(\text{Im } z) \in \{\pm 1\}. \quad (2.5)$$

Thus, $V_{\mathbb{R}}^z$ is the real vector space of all pairs $(\tilde{\varphi}, \varphi) = (-is\varphi^\dagger, \varphi)$ for $\varphi \in \mathbb{C}^N$. The Gaussian γ decreases rapidly along $V_{\mathbb{R}}^z$. Indeed,

$$\Re \langle \tilde{\varphi}, \varphi z - H \varphi \rangle|_{V_{\mathbb{R}}^z} = \Re h(\varphi, -is(z - H)\varphi) = |\text{Im } z| h(\varphi, \varphi) \geq 0, \quad (2.6)$$

so we may integrate γ along $V_{\mathbb{R}}^z$. By a standard formula for Gaussian integrals, we have

$$\int_{V_{\mathbb{R}}^z} e^{-\langle \tilde{\varphi}, \varphi z - H \varphi \rangle} = \text{Det}^{-1}(z - H), \quad (2.7)$$

where the integral is over $V_{\mathbb{R}}^z$ with (i \mathbb{R} -valued) Lebesgue measure normalized by the condition $\int_{V_{\mathbb{R}}^z} e^{-\langle \tilde{\varphi}, \varphi \rangle} = 1$. (This measure is not made explicit in our notation.)

Expressing $\text{Tr}(z - H)^{-1}$ as a logarithmic derivative,

$$\text{Tr}(z - H)^{-1} = \frac{d}{dz} \ln \text{Det}(z - H) = \frac{\text{Det}'(z - H)}{\text{Det}(z - H)}, \quad (2.8)$$

we see that we need a Gaussian integration formula for $\text{Det}(z - H)$ (where $z \in \mathbb{C}$) in addition to that for reciprocals $\text{Det}^{-1}(z - H)$. Such a formula can be had by replacing commuting variables φ by anticommuting variables ψ , i.e. we view

$$\langle \tilde{\psi}, \psi z - H \psi \rangle \in \wedge^2(\mathbb{C}^N \oplus (\mathbb{C}^N)^*) \quad (2.9)$$

as a quadratic element of the exterior algebra generated by the direct sum $\mathbb{C}^N \oplus (\mathbb{C}^N)^*$. The precise meaning is this. Let $\{e_i\}$ be a basis of \mathbb{C}^N and $\{e^i\}$ be the dual basis of $(\mathbb{C}^N)^*$. Let $\ell : \mathbb{C}^N \oplus (\mathbb{C}^N)^* \rightarrow \wedge(\mathbb{C}^N \oplus (\mathbb{C}^N)^*)$ be the canonical embedding, or simply put, view $\tilde{\psi}_i \equiv \ell(e_i)$ and $\psi^i \equiv \ell(e^i)$ as anticommuting variables or generators of the exterior algebras $\wedge(\mathbb{C}^N)$ and $\wedge((\mathbb{C}^N)^*)$, respectively. Then, we define $\langle \tilde{\psi}, \psi z - H \psi \rangle$ to be the element of $\wedge^2(\mathbb{C}^N \oplus (\mathbb{C}^N)^*)$ given by

$$\langle \tilde{\psi}, \psi z - H \psi \rangle := \sum_{i,j} \tilde{\psi}_i \langle e^i, (z - H) e_j \rangle \psi^j. \quad (2.10)$$

By exponentiating this expression, we get a Gaussian element in (the even part of) the full exterior algebra

$$e^{\langle \tilde{\psi}, \psi z - H \psi \rangle} \in \bigoplus_{k=0}^N \wedge^{2k} (\mathbb{C}^N \oplus (\mathbb{C}^N)^*). \quad (2.11)$$

The Berezin integral $f \mapsto \int f$ for $f \in \wedge^{2N} (\mathbb{C}^N \oplus (\mathbb{C}^N)^*)$ is, by definition, the projection on the one-dimensional subspace $\wedge^{2N} (\mathbb{C}^N \oplus (\mathbb{C}^N)^*)$ of top degree. In the case of our Gaussian integrand, the result of this projection is known to be proportional to the determinant of the operator $z - H$. We normalize the Berezin integral in such a way that the constant of proportionality is unity:

$$\int e^{\langle \tilde{\psi}, \psi z - H \psi \rangle} = \text{Det}(z - H). \quad (2.12)$$

To summarize the above, we have two Gaussian integration formulas: equation (2.12) for the secular determinant $\text{Det}(z - H)$ and equation (2.7) for its reciprocal.

By multiplying these formulas, averaging the result with the given probability density $d\mu_N$ and interchanging the order of integrations, we obtain

$$\int \frac{\text{Det}(w_1 - H)}{\text{Det}(w_0 - H)} d\mu_N(H) = \int_{V_{\mathbb{R}}^{w_0}} \Omega(\varphi \otimes \tilde{\varphi} + \psi \otimes \tilde{\psi}) e^{-w_0 \langle \tilde{\varphi}, \varphi \rangle + w_1 \langle \tilde{\psi}, \psi \rangle}, \quad (2.13)$$

where $w_1 \in \mathbb{C}$, $w_0 \in \mathbb{C} \setminus \mathbb{R}$ and Ω is the characteristic function

$$\Omega(K) = \int e^{\text{Tr} HK} d\mu_N(H). \quad (2.14)$$

Note that formula (2.13) requires the evaluation of Ω for

$$K = \varphi \otimes \tilde{\varphi} + \psi \otimes \tilde{\psi} = \sum_{i,j=1}^N (\varphi^i \tilde{\varphi}_j + \psi^i \tilde{\psi}_j) e_i \langle e^j, \cdot \rangle, \quad (2.15)$$

where $\varphi^i : \mathbb{C}^N \rightarrow \mathbb{C}$ and $\tilde{\varphi}_j : (\mathbb{C}^N)^* \rightarrow \mathbb{C}$ are the linear coordinates associated with the bases $\{e_i\}$ of \mathbb{C}^N and $\{e^j\}$ of $(\mathbb{C}^N)^*$. Thus, the operator K is an endomorphism of \mathbb{C}^N with coefficients in the tensor product

$$S(\mathbb{C}^N \oplus (\mathbb{C}^N)^*) \otimes \wedge(\mathbb{C}^N \oplus (\mathbb{C}^N)^*) \quad (2.16)$$

of the symmetric and exterior algebras of $\mathbb{C}^N \oplus (\mathbb{C}^N)^*$. It will be important that the numerical part of $K = \varphi \otimes \tilde{\varphi} + \psi \otimes \tilde{\psi}$ has finite rank.

The relation (2.13) transfers the integral over $N \times N$ random matrices H to an integral over the variables φ, ψ constituting the bilinear K . This transfer will be a step forward if we can calculate the function $\Omega(K)$ or, at least, gather enough information about it. For the case of a Gaussian probability measure μ_N , the Fourier–Laplace transform $\Omega(K)$ is also Gaussian. The supersymmetry formalism then takes its course and delivers results quickly. However, using the traditional version of the supersymmetry method one did not know how to proceed in the general case of non-Gaussian μ_N .

2.2. Superbosonization

One way to proceed, as we shall now review, is to make a symmetry assumption about $\Omega(K)$. Let $V := (\mathbb{C}^N)^* \oplus \mathbb{C}^N$. Then $e^{\text{Tr} HK}$ for $K = \varphi \otimes \tilde{\varphi} + \psi \otimes \tilde{\psi}$ is a superfunction $f : V \rightarrow \wedge(V^*)$, and by making the identifications $\psi^i \equiv d\varphi^i$ and $\tilde{\psi}_i \equiv d\tilde{\varphi}_i$, we may regard $f = e^{\text{Tr} HK}$ as a holomorphic differential form on the complex vector space V . Let now

μ_N be invariant under conjugation $H \mapsto gHg^{-1}$ by the elements g of some compact group G . Then by integrating f against $d\mu_N$ we obtain a differential form $\Omega : V \rightarrow \wedge(V^*)$ which is G -equivariant, i.e.

$$\Omega(v) = g\Omega(gv), \quad (2.17)$$

where $(g, v) \mapsto gv$ and $(g, \Omega) \mapsto g\Omega$ are the natural G -actions on V resp. $\wedge(V^*)$. Later, we will write this equivariance property more intuitively as $\Omega(K) = \Omega(gKg^{-1})$.

In such a setting, the superbosonization method offers a reduction step which is available [17] for the classical Lie groups $G = U_N, O_N$ and USp_N . For each of these groups, the algebra of G -equivariant differential forms on V is generated by (the dual of) the \mathbb{Z}_2 -graded vector space $W = W_0 \oplus W_1$ of quadratic G -invariants [16]. After lifting the differential form $\Omega : V \rightarrow \wedge(V^*)$ to a superfunction $\hat{\Omega} : W_0 \rightarrow \wedge(W_1^*)$, the step of ‘superbosonization’ transfers the integral on the rhs of (2.13) to an integral of the lifted superfunction over a (low-dimensional) Riemannian symmetric superspace.

We now reproduce from [17] the details for the case of $G = U_N$, with a few notational adjustments to fit the present situation. By immediate generalization of (2.13), we have

$$\int \frac{\prod_{b=1}^q \text{Det}(w_{1,b} - H)}{\prod_{a=1}^p \text{Det}(w_{0,a} - H)} d\mu_N(H) = \int \Omega \left(\sum_a \varphi_a \langle \tilde{\varphi}_a, \cdot \rangle + \sum_b \psi_b \langle \tilde{\psi}_b, \cdot \rangle \right) \times e^{-\sum w_{0,a} \langle \tilde{\varphi}_a, \varphi_a \rangle + \sum w_{1,b} \langle \tilde{\psi}_b, \psi_b \rangle}, \quad (2.18)$$

where the φ -integral is over the real subspace

$$\tilde{\varphi}_a = -is_a \varphi_a^\dagger, \quad s_a = \text{sign}(\text{Im } w_{0,a}), \quad a = 1, \dots, p. \quad (2.19)$$

While intending to specialize to the case of $p = q$ later, we here describe the general case $p \neq q$ for a clear exposition of the formalism.

To simplify the notation, it is convenient to regard the vectors $\varphi_1, \dots, \varphi_p$ as the components of a linear mapping φ from \mathbb{C}^p to \mathbb{C}^N :

$$\varphi := (\varphi_1, \dots, \varphi_p) \in \text{Hom}(\mathbb{C}^p, \mathbb{C}^N). \quad (2.20)$$

Similarly, we view $\tilde{\varphi} := (\tilde{\varphi}_1, \dots, \tilde{\varphi}_p)$ as a linear mapping:

$$\tilde{\varphi} \in \text{Hom}(\mathbb{C}^N, \mathbb{C}^p). \quad (2.21)$$

Using the same conventions on the anti-commuting side, we write our integral as

$$\int \frac{\prod_{b=1}^q \text{Det}(w_{1,b} - H)}{\prod_{a=1}^p \text{Det}(w_{0,a} - H)} d\mu_N(H) = \int \Omega(\varphi \tilde{\varphi} + \psi \tilde{\psi}) e^{-\text{Tr}(\varphi w_0 \tilde{\varphi} + \psi w_1 \tilde{\psi})}. \quad (2.22)$$

Here $\text{Tr} = \text{Tr}_{\mathbb{C}^N}$, and $w_0 = \text{diag}(w_{0,1}, \dots, w_{0,p})$, $w_1 = \text{diag}(w_{1,1}, \dots, w_{1,q})$ are diagonal operators. The integral is over

$$\tilde{\varphi} = -is\varphi^\dagger, \quad s = \text{diag}(s_1, \dots, s_p). \quad (2.23)$$

It is evident that the integrand on the rhs of (2.22) has the invariance property

$$f(\varphi, \tilde{\varphi}, \psi, \tilde{\psi}) = f(g\varphi, \tilde{\varphi}g^{-1}, g\psi, \tilde{\psi}g^{-1}) \quad (2.24)$$

for $g \in U_N$ and hence, by holomorphic continuation, for $g \in GL_N$. This implies that there exists [17] a (lifted) function $\hat{f}(Q)$ of a supermatrix $Q = \begin{pmatrix} x & \sigma \\ \tau & y \end{pmatrix}$ such that

$$\hat{f} \begin{pmatrix} \tilde{\varphi}\varphi & \tilde{\varphi}\psi \\ \tilde{\psi}\varphi & \tilde{\psi}\psi \end{pmatrix} = f(\varphi, \tilde{\varphi}, \psi, \tilde{\psi}). \quad (2.25)$$

Precisely speaking, $\widehat{f} : W_0 \rightarrow \wedge(W_1^*)$ is a function on the \mathbb{Z}_2 -even vector space $W_0 = \text{End}(\mathbb{C}^p) \oplus \text{End}(\mathbb{C}^q)$ (the diagonal blocks of Q) with values in the exterior algebra of the dual of the \mathbb{Z}_2 -odd vector space $W_1 = \text{Hom}(\mathbb{C}^p, \mathbb{C}^q) \oplus \text{Hom}(\mathbb{C}^q, \mathbb{C}^p)$ (the off-diagonal blocks of Q). The lift $\widehat{f}(Q)$ turns into the given function $f(\varphi, \tilde{\varphi}, \psi, \tilde{\psi})$ upon substituting for Q the quadratic GL_N -invariants,

$$Q = \begin{pmatrix} x & \sigma \\ \tau & y \end{pmatrix} \rightarrow \begin{pmatrix} \tilde{\varphi}\varphi & \tilde{\varphi}\psi \\ \tilde{\psi}\varphi & \tilde{\psi}\psi \end{pmatrix}. \quad (2.26)$$

The ensuing step of superbosonization exploits the GL_N -symmetry of the integrand to implement a reduction: it transfers the integral over the variables φ, ψ to an integral over the supermatrices Q :

$$\int f(\varphi, \tilde{\varphi}, \psi, \tilde{\psi}) = c_{p,q} \int DQ \text{SDet}^N(Q) \widehat{f}(Q). \quad (2.27)$$

The integral on the right-hand side is over

$$H_p^s \times U_q \subset \text{End}(\mathbb{C}^p) \times \text{End}(\mathbb{C}^q), \quad (2.28)$$

where $U_q \equiv \text{U}(\mathbb{C}^q)$ is the unitary group of \mathbb{C}^q and

$$H_p^s := \{-isM \mid M = M^\dagger > 0\} \quad (2.29)$$

is a space isomorphic to the positive Hermitian $p \times p$ matrices (replacing the quadratic U_N -invariant $\varphi^\dagger\varphi$). With a natural choice [17] of normalization for the Berezin integration form DQ , the normalization factor is $c_{p,q} = \text{vol}(U_n)/\text{vol}(U_{n-p+q})$. In the important special case of $p = q$, the Berezin integration form DQ is simply the product of differentials times the product of derivatives:

$$DQ \propto \prod_{a,a'} dx_{aa'} \prod_{b,b'} dy_{bb'} \prod_{a,b} \frac{\partial^2}{\partial \sigma_{ab} \partial \tau_{ba}}. \quad (2.30)$$

Finally, it should be stressed that the formula (2.27) is valid if and only if $N \geq p$.

Application of the superbosonization formula (2.27) to equation (2.22) yields the identity

$$\int \frac{\prod_{b=1}^q \text{Det}(w_{1,b} - H)}{\prod_{a=1}^p \text{Det}(w_{0,a} - H)} d\mu_N(H) = c_{p,q} \int DQ \text{SDet}^N(Q) \widehat{\Omega}(Q) e^{-\text{STr } wQ}, \quad (2.31)$$

where $\text{STr } wQ \equiv \text{Tr}_{\mathbb{C}^p}(w_0 Q) - \text{Tr}_{\mathbb{C}^q}(w_1 Q)$. The function $\widehat{\Omega}(Q)$ is a lift of the characteristic function $\Omega(K)$ for $K = \varphi\tilde{\varphi} + \psi\tilde{\psi}$.

In view of the result (2.31), our short-term goals should now be well motivated: the key object to understand is the lifted characteristic (super)-function $\widehat{\Omega}(Q)$. If we can control $\widehat{\Omega}$, results for the level correlation functions will follow from a large- N asymptotic saddle analysis of the Q -integral.

3. Coulomb gas argument

Based on what is called the Dyson Coulomb gas, we are now going to study $\Omega(K)$ for the rank-1 case $K = k\Pi$ with $k \in \mathbb{R}$ and Π the projector on a one-dimensional subspace of \mathbb{C}^N . A related situation has been investigated in the work of Zinn-Justin [29, 30], Collins [6], and Guionnet and Maida [15]; we will comment on the literature as we go along. We begin by reviewing some basic material.

3.1. Voiculescu R -transform

As before, let μ_N be a probability measure (with or without invariance properties) for Hermitian $N \times N$ matrices H . Let

$$m_{n,N} := N^{-1} \int \text{Tr}(H^n) d\mu_N(H) \quad (3.1)$$

denote the n th moment of μ_N . We shall assume that $m_{n,N}$ has a limit,

$$m_n := \lim_{N \rightarrow \infty} m_{n,N}, \quad (3.2)$$

and consider a generating function $z \mapsto g(z)$ for these moments at $N = \infty$:

$$g(z) := \sum_{n=0}^{\infty} m_n z^{-n-1}. \quad (3.3)$$

This series (when it converges) or rather its analytic continuation

$$g(z) = \lim_{N \rightarrow \infty} N^{-1} \int \text{Tr}(z - H)^{-1} d\mu_N(H) \quad (z \in \mathbb{C} \setminus \mathbb{R}) \quad (3.4)$$

is the Cauchy transform

$$g(z) = \int_{\mathbb{R}} \frac{dv(x)}{z - x}, \quad dv(x) = \pi^{-1} \lim_{\epsilon \rightarrow 0+} \Im g(x - i\epsilon) dx \quad (3.5)$$

of the large- N limit of the so-called density of states ν . Let us now assume that ν has compact support. Then there exists a number $r > 0$ such that for $z \in \mathbb{C}$ with $|z| > r$ the power series (3.3) converges, the derivative $g'(z)$ does not vanish and hence by the implicit function theorem the function $z \mapsto g(z)$ has a local inverse. Because the expansion of $g(z)$ around $z = \infty$ begins as $k \equiv g(z) = z^{-1} + \dots$, the power series for the inverse function will likewise begin as $z = k^{-1}$ plus corrections. These considerations lead to Voiculescu's definition of the R -transform [23]:

$$g(z) = k \iff k^{-1} + R(k) = z, \quad R(k) = \sum_{n=1}^{\infty} c_n k^{n-1}. \quad (3.6)$$

Thus the R -transform $k \mapsto R(k)$ is the function inverse to $z \mapsto g(z)$ with the pole k^{-1} subtracted. Under the assumption of compact support for ν the power series for $R(k)$ converges for sufficiently small k . The coefficients c_n are called *free cumulants*.

Freeness of random variables is defined in an algebraic way [25] which will not be reviewed here. Suffice it to say that two random matrices A, B are free (in the limit $N = \infty$) if the probability law of $A + B$ remains unchanged under conjugation $B \mapsto U^\dagger B U$ by any $U \in U_\infty$. Voiculescu proved [23] that the R -transform is linear for free convolution, i.e. if A, B are free (with R -transforms $R_A(k)$ resp. $R_B(k)$), then $R_{A+B}(k) = R_A(k) + R_B(k)$. This linearity property parallels the fact that the cumulants of a sum of commutative random variables equal the sum of the cumulants, and it leads to the expectation that the R -transform is closely related to the logarithm of the Fourier transform of μ_N , $N \rightarrow \infty$.

Let us mention in passing that, since $g(z)$ is also known as the Green's function, physicists by Zee's fancy [28] sometimes call $b(k) := k^{-1} + R(k)$ the Blue's function.

3.1.1. Examples. The Gaussian measure μ_N with density $d\mu_N(H) \propto e^{-\frac{N}{2} \text{Tr} H^2} dH$ is called the Gaussian Unitary Ensemble (GUE) with $c_2 = 1$. For this measure, one has $R(k) = k$ and solving the equation $z = k^{-1} + R(k) = k^{-1} + k$ for $k = g(z)$, one finds

$$g(z) = \frac{1}{2}(z \pm \sqrt{z^2 - 4}), \quad (3.7)$$

which gives Wigner's semicircle law $dv(x) = (2\pi)^{-1} \sqrt{4 - x^2} dx$.

Another example (taken from recent work [18] by Lueck, Sommers and one of the authors, on the energy correlations of a random matrix model for disordered bosons) is this. Consider

$$R(k) = \frac{k}{1-k^2} = \sum_{n=1}^{\infty} k^{2n-1}. \quad (3.8)$$

Thus, all odd free cumulants vanish and the even free cumulants are all equal to unity. Solving Voiculescu's equation $k^{-1} + R(k) = z$ for $k = g(z)$, one obtains

$$g(z) = i \left(\sqrt{\frac{1}{27} - \frac{1}{4z^2}} - \frac{i}{2z} \right)^{1/3} - i \left(\sqrt{\frac{1}{27} - \frac{1}{4z^2}} + \frac{i}{2z} \right)^{1/3}. \quad (3.9)$$

The density of states of this example has compact support but is unbounded due to an inverse cube root singularity $|x|^{-1/3}$ at $x = 0$.

3.2. Eigenvalue reduction of Ω

We now specialize to the case of a U_N -invariant probability measure for Hermitian operators H with density $d\mu_N(H) = e^{-N \text{Tr } V(H)} dH$. The goal here is to relate the R -transform $R(k)$ to the large- N limit of the characteristic function (1.2) for $K = k\Pi$ with Π a rank-1 projector. Our approach will be similar to that of P. Zinn-Justin [30] based on the Harish–Chandra–Itzykson–Zuber integral.

We start by diagonalizing the Hamiltonian H by a unitary transformation:

$$H = g^{-1} X g, \quad X = \text{diag}(x_1, \dots, x_N), \quad g \in U_N. \quad (3.10)$$

Recalling that the Jacobian $J(X)$ associated with this transformation is the square of the Vandermonde determinant:

$$J(X) = \prod_{i < j} (x_i - x_j)^2, \quad (3.11)$$

we cast the expression for the characteristic function in the form

$$\Omega(K) = C_N \int_{\mathbb{R}^N} \left(\int_{U_N} e^{\text{Tr}(XgKg^{-1})} dg \right) e^{-N \text{Tr } V(X)} J(X) d^N x, \quad (3.12)$$

where dg is a Haar measure for U_N . The normalization constant C_N is determined by the condition $\Omega(0) = 1$.

Now let $K \equiv k\Pi$, where $k \in \mathbb{R}$ and Π is the orthogonal projector on some (fixed) complex line in \mathbb{C}^N . We are then faced with the inner integral

$$\int_{U_N} e^{k \text{Tr}(Xg\Pi g^{-1})} dg. \quad (3.13)$$

The integrand depends on $g \in U_N$ only through the projector Π conjugated by g , and the set of all these projectors $g\Pi g^{-1}$ is in bijection with the projective space $\mathbb{C}P^{N-1} \simeq U_N/(U_1 \times U_{N-1})$ of complex lines in \mathbb{C}^N . By parametrizing $g\Pi g^{-1}$ in the eigenbasis of H as $(g\Pi g^{-1})_{ij} = u_i \bar{u}_j$ with $\sum_{j=1}^N |u_j|^2 = 1$, we reduce our integral to

$$\int_{U_N} e^{k \text{Tr}(Xg\Pi g^{-1})} dg = \int_{\mathbb{C}P^{N-1}} e^{k \sum_{j=1}^N x_j |u_j|^2} du, \quad (3.14)$$

where du is a U_N -invariant measure for $\mathbb{C}P^{N-1}$.

Now $\mathbb{C}P^{N-1}$ is a Kähler manifold with U_N -invariant Riemannian geometry, and the function

$$\mu : \mathbb{C}P^{N-1} \rightarrow \text{Lie } U_N, \quad g \cdot (U_1 \times U_{N-1}) \mapsto ig\Pi g^{-1}, \quad (3.15)$$

is a momentum mapping [3]. We observe that the expression $k \operatorname{Tr}(Xg\Pi g^{-1})$ in the exponent of our integrand is obtained by contracting μ with the Lie algebra element $-ikX \in \operatorname{Lie} U_N$. It follows that the integral is governed by the Duistermaat–Heckman localization principle [3]. In other words, the integral can be computed exactly by performing the stationary-phase approximation (including the Gaussian fluctuations) for each of its critical points and summing the contributions.

There are N critical points; these are the points where $g\Pi g^{-1}$ is diagonal (with one diagonal element equal to unity and all others equal to zero). By computing the contribution from each point and taking the sum, we get

$$\int_{\mathbb{C}P^{N-1}} e^{k \sum_{j=1}^N x_j |u_j|^2} d\mu = C_{1,N} k^{-(N-1)} \sum_{i=1}^N \frac{e^{kx_i}}{\prod_{j \neq i} (x_i - x_j)}, \quad (3.16)$$

with some N -dependent constant $C_{1,N}$.

3.3. Coulomb gas

Based on the exact expressions (3.12)–(3.16), our goal is to compute the large- N asymptotics of $N^{-1} \ln \Omega(Nk\Pi)$. We begin by recalling [8] that, governed by

$$\prod_{i < j} (x_i - x_j)^2 \prod_l e^{-N V(x_l)} dx_l, \quad (3.17)$$

the eigenvalues x_1, \dots, x_N distribute for $N \rightarrow \infty$ according to the equilibrium measure, ν , which is determined by minimizing Dyson’s Coulomb gas energy functional:

$$N^2 \int V(x) d\nu(x) - N^2 \iint \ln |x - y| d\nu(x) d\nu(y), \quad (3.18)$$

the energy of a gas or fluid of charged particles subject to a confining potential $N V$ and mutual repulsion by (the two-dimensional form of) Coulomb’s law. The Euler–Lagrange equation for the Coulomb gas energy functional reads

$$V(x) - 2 \int \ln |x - y| d\nu(y) + \ell = 0 \quad (x \in \operatorname{supp} \nu), \quad (3.19)$$

where ℓ is a Lagrange multiplier for the normalization constraint $\int d\nu(x) = 1$. By differentiating once with respect to x , one obtains

$$V'(x) = 2 \operatorname{P.V.} \int \frac{d\nu(y)}{x - y} \quad (x \in \operatorname{supp} \nu). \quad (3.20)$$

Physically speaking, this condition means that the total force vanishes in the state of equilibrium inside the fluid.

The task of determining the measure ν from equation (3.19) can be formulated and solved as a Riemann–Hilbert problem [8]. It is known that the solution is unique and corresponds to a minimum of the energy (hence a maximum of the integrand).

From now on we shall simplify our work by taking the confining potential V of the probability measure μ_N to be *convex*. This assumption ensures that the large- N density of states is supported on a single interval: $\operatorname{supp} \nu = [a, b]$.

Next recall the definition (3.5) of the Cauchy transform $g(z)$. Denoting by g_{\pm} the two limits

$$g_{\pm}(x) = \lim_{\varepsilon \rightarrow 0+} g(x \pm i\varepsilon), \quad (3.21)$$

which $g(z)$ takes on approaching $x \in [a, b]$ from the upper or lower half of the complex plane, one rewrites the relation (3.20) as

$$V'(x) = g_+(x) + g_-(x). \quad (3.22)$$

As it stands, this equation holds only for $x \in [a, b] \subset \mathbb{R}$. However, from general theory [9], one knows that $g_{\pm}(x)$ are the two branches of a double-valued complex-analytic function $z \mapsto (g(z), h(z))$ evaluated at $z = x$. Thus, by the principle of analytic continuation we have, for all $z \in \mathbb{C} \setminus \{a, b\}$,

$$V'(z) = g(z) + h(z). \quad (3.23)$$

Note that $g(a) = h(a) = g_+(a) = g_-(a)$ and $g(b) = h(b) = g_+(b) = g_-(b)$.

We will also make use of the integrated form of equation (3.23). For $z \in \mathbb{C} \setminus (-\infty, b]$, let

$$G(z) := \int_a^b \ln(z - x) dv(x), \quad (3.24)$$

where the principal branch of the logarithm is assumed, giving $G(x) \in \mathbb{R}$ for $x \in (b, \infty)$. Then, let $H : \mathbb{C} \setminus (-\infty, b] \rightarrow \mathbb{C}$ be defined by the equation

$$V(z) = G(z) + H(z) - \ell. \quad (3.25)$$

We observe that $G'(z) = g(z)$ and hence $H'(z) = h(z)$. Moreover, by combining (3.25) with the Euler–Lagrange equation (3.19), we have

$$H(b) = V(b) - G(b) + \ell = V(b) - \int_a^b \ln |b - x| dv(x) + \ell = G(b). \quad (3.26)$$

By the same reasoning, $H(a) = G(a)$.

3.4. Asymptotics for k small

In this subsection, we take the absolute value of the real number k to be small. In order to compute the large- N asymptotics of $\ln \Omega(Nk\Pi)$ for this situation, we modify the exact integral representation (3.12)–(3.16) by expressing the right-hand side of (3.16) as a complex contour integral

$$\sum_{i=1}^N \frac{e^{kx_i}}{\prod_{j(\neq i)} (x_i - x_j)} = \frac{1}{2\pi i} \oint_{\mathcal{C}_x} \frac{e^{kz} dz}{\prod_{j=1}^N (z - x_j)}, \quad (3.27)$$

where the contour \mathcal{C}_x loops around the set of points x_1, \dots, x_N . We thus obtain

$$\Omega(Nk\Pi) = C_{2,N} k^{-N+1} \int_{\mathbb{R}^N} \left(\oint_{\mathcal{C}_x} \frac{e^{Nkz} dz}{\prod_{l=1}^N (z - x_l)} \right) \prod_{i < j} (x_i - x_j)^2 \prod_l e^{-N V(x_l)} dx_l. \quad (3.28)$$

Because the Coulomb gas energy is of order N^2 , which is large compared to the perturbation due to the contour integral and here in particular the ‘external electric field’ term Nkz , we expect the density of the fluid of charges x_1, \dots, x_N to remain the same in the limit $N \rightarrow \infty$. (This will turn out to be fully correct as long as k does not exceed a critical value.) Thus, the charges x_1, \dots, x_N are still expected to distribute (for $N \rightarrow \infty$) according to the equilibrium measure ν with support $[a, b]$.

Taking this fact for granted, we fix a contour \mathcal{C} encircling $\text{supp } \nu = [a, b]$ and interchange the integral over $\{x_1, \dots, x_N\}$ with the contour integral. Then, by taking the logarithm and passing to the large- N limit, we arrive at

$$\begin{aligned} \omega(k) &:= \lim_{N \rightarrow \infty} N^{-1} \ln \Omega(Nk\Pi) \\ &= \gamma + \lim_{N \rightarrow \infty} N^{-1} \ln \oint_{\mathcal{C}} e^{Nkz - N \int_a^b \ln(kz - kx) dv(x)} dz, \end{aligned} \quad (3.29)$$

with some number γ which remains unknown for the moment, as we did not keep track of the overall normalization constant. Note that $\omega(0) = 0$ from $\Omega(0) = 1$.

The integral (3.29) for $N \rightarrow \infty$ is computable by saddle analysis and the method of steepest descent. We first look for the critical points of the integrand. The condition for $z \equiv z_0$ to be an extremum is

$$k = \int_a^b \frac{dv(x)}{z_0 - x} = g(z_0). \quad (3.30)$$

When does this equation have a solution for $z_0 \in \mathbb{R}$? To find the answer, note that the function $g(x)$ for $x \in \mathbb{R} \setminus [a, b]$ is monotonically decreasing:

$$g'(x) = - \int_a^b \frac{dv(y)}{(x - y)^2} < 0 \quad (x \notin [a, b]). \quad (3.31)$$

We therefore have the inequality $g(b) > g(\infty) = 0 > g(a)$ and the function

$$g : \mathbb{R} \setminus (a, b) \rightarrow [g(a), g(b)] \quad (3.32)$$

is a bijection. Thus, for any $k \in [g(a), g(b)]$, there exists a unique solution

$$z_0 = g^{-1}(k) \quad (3.33)$$

of the equation $k = g(z_0)$. Note that $z_0 \in \mathbb{R} \setminus (a, b)$.

In the following let k be fixed, with $g(a) < k < g(b)$. To evaluate the integral (3.29) by steepest descent, we deform the contour \mathcal{C} for z into the axis $g^{-1}(k) + i\mathbb{R}$ parallel to the imaginary z -axis. Because $g'(x) < 0$ for $x \in \mathbb{R} \setminus [a, b]$, the saddle at $z_0 = g^{-1}(k)$ is a local minimum of the integrand evaluated along the real axis, but is a local maximum of the integrand on the axis $g^{-1}(k) + i\mathbb{R}$. Thus, the path of steepest descent leads across the saddle $z_0 = g^{-1}(k)$ in the direction of $i\mathbb{R}$. Steepest descent evaluation of the integral then yields

$$\omega(k) = -1 + k g^{-1}(k) - \int_a^b \ln(k g^{-1}(k) - kx) dv(x). \quad (3.34)$$

Note that since $k g^{-1}(k) \rightarrow 1$ as $k \rightarrow 0$, this satisfies the required normalization condition $\omega(0) = 0$ by insertion of the additive constant $\gamma = -1$. For later use, we write our result in the equivalent form

$$\omega(k) = -1 + k g^{-1}(k) - G(g^{-1}(k)) - \ln k. \quad (3.35)$$

Now by using $\frac{d}{dz}(kz - G(z))|_{z=g^{-1}(k)} = 0$, we infer that ω has derivative

$$\omega'(k) = g^{-1}(k) - 1/k, \quad (3.36)$$

or equivalently,

$$(k^{-1} + \omega'(k))|_{k=g(z)} = z. \quad (3.37)$$

Comparison with (3.6) then shows that $\omega'(k) = R(k)$ coincides with the Voiculescu R -transform. Hence, by integrating,

$$\omega(k) = \int_0^k R(t) dt. \quad (3.38)$$

The reasoning above makes good sense as long as $g(a) < k < g(b)$, so that the saddle $z_0 = g^{-1}(k)$ lies outside the spectrum $[a, b]$. It should be mentioned that the same result (3.38) was established under somewhat different assumptions (see below) by rigorous analysis [15] using a large deviation principle.

3.5. Asymptotics for k large

We turn to the complementary case of large k , meaning the ranges $k < g(a) < 0$ and $k > g(b) > 0$. In this case, as we shall see, one charge dissociates from the fluid in the interval $[a, b]$ in response to the strong force exerted by the external field term e^{Nkx} . Consequently, the assumptions leading to formula (3.29) are no longer met and we need to proceed in a different manner.

Our modified procedure is as follows. Abandoning the contour integral formula (3.27), we insert the identities (3.14), (3.16) into the eigenvalue integral representation (3.12) for Ω and use S_N permutation symmetry to single out one eigenvalue, say the first one $x_1 =: x$. In this way, we obtain the exact expression

$$\Omega(Nk\Pi) = C_{3,N} k^{-N+1} \int_{\mathbb{R}} e^{Nkx - N V(x)} \pi_{N-1,N}(x) dx, \quad (3.39)$$

$$\pi_{N-1,N}(x) = Z_N^{-1} \int_{\mathbb{R}^{N-1}} \prod_{2 \leq i < j} (x_i - x_j)^2 \prod_{2 \leq l \leq N} (x - x_l) e^{-N V(x_l)} dx_l. \quad (3.40)$$

The function $\pi_{N-1,N}(x)$ is a polynomial of degree $N-1$ in the variable x . By a classical result [1, 20] it is actually the *orthogonal* polynomial of degree $N-1$ associated with the weight function $e^{-N V(x)}$. We find it convenient to choose the normalization constants $C_{3,N}$ and Z_N in such a way that $\pi_{N-1,N}(x) = x^{N-1} + \dots$ is monic.

Once again, we will use saddle analysis and the method of steepest descent to calculate the integral (3.39) for large N . To prepare this step, we observe that the orthogonal polynomial $\pi_{N-1,N}$ has a big number $N-1$ of real zeroes concentrated in a small neighborhood of the interval $[a, b]$. The large- N asymptotics of the high-order polynomial $\pi_{N-1,N}$ divides the k -axis into different regions. In fact, when the absolute value of k is large, the term e^{Nkx} pushes the saddle of the x -integral away from $[a, b]$ and thus into the region where $\pi_{N-1,N}$ does not oscillate but varies monotonically. The large- N asymptotic analysis of (3.39) then is rather straightforward; see below. On the other hand, as k decreases below a critical value the saddle merges with the fluid $[a, b]$, where $\pi_{N-1,N}$ oscillates rapidly. The integral representation (3.39) then does not give a direct view of the large- N asymptotics. Fortunately, this case has already been dealt with in section 3.4 using the alternative representation by a contour integral.

For definiteness, from here on let $k > g(b)$. (For $k < g(a)$, the argument goes just the same.) The main contribution to the integral (3.39) then comes from large values of x , where the polynomial (3.40) behaves as

$$\pi_{N-1,N}(x) \sim e^{(N-1) \int_a^b \ln(x-y) dv(y)} \sim e^{NG(x)}. \quad (3.41)$$

By inserting this asymptotic expression into the integral (3.39), we obtain

$$\omega(k) = \gamma_1 - \ln k + \lim_{N \rightarrow \infty} N^{-1} \ln \int e^{Nkx - N V(x) + NG(x)} dx \quad (3.42)$$

with another constant γ_1 .

The condition for $x \equiv x_0$ to be an extremum of the integrand is

$$k = V'(x_0) - g(x_0). \quad (3.43)$$

From (3.23) we know that $V'(z) - g(z) = h(z)$ is the second branch of the double-valued function $z \mapsto (g(z), h(z))$. Thus, the saddle-point equation is

$$k = h(x_0). \quad (3.44)$$

This equation does not always have a solution for $x_0 \in \mathbb{R}$. However, since V is analytic and convex by assumption, the derivative

$$h'(x) = \frac{d}{dx}(V'(x) - g(x)) = V''(x) + \int_a^b \frac{dv(y)}{(x-y)^2} \quad (3.45)$$

for $x > b$ is positive, so $h(x)$ is monotonically increasing. Therefore, if $k > h(b) = g(b)$, then k lies in the range of the function $h : (b, +\infty) \rightarrow \mathbb{R}$, and by the implicit function theorem the monotonicity of h guarantees the local existence of an inverse

$$k \mapsto h^{-1}(k) = z \quad (3.46)$$

of the function $z \mapsto h(z) = k$. By $h'(x) > 0$ for $x > b$, the solution $x_0 = h^{-1}(k)$ of (3.44) is a maximum of the integrand. Hence, by applying the method of steepest descent and evaluating the integrand of (3.39) at the critical point $x_0 = h^{-1}(k)$, we obtain

$$\begin{aligned} \omega(k) &= \gamma_1 + k h^{-1}(k) - V(h^{-1}(k)) + \int_a^b \ln \left(\frac{h^{-1}(k) - x}{k} \right) dv(x) \\ &= \gamma_1 + \ell + k h^{-1}(k) - H(h^{-1}(k)) - \ln k, \end{aligned} \quad (3.47)$$

where the second equality is by (3.25). We observe that the derivative of ω is still given by the R -transform:

$$\omega'(k) = h^{-1}(k) - 1/k = R(k). \quad (3.48)$$

By matching (3.47) to the small- k result (3.34), we infer that $\gamma_1 + \ell = -1$. (Matching will be justified in section 3.6.)

Essentially the same reasoning goes through for the opposite range $k < g(a) = h(a) < 0$, resulting in the same formula (3.47). Note that the argument of the logarithm under the integral sign in (3.47) remains positive in this k -range, as there is a sign change in both the numerator and the denominator.

To summarize our results, we have found that

$$\omega(k) = \begin{cases} -1 + k g^{-1}(k) - G(g^{-1}(k)) - \ln k, & g(a) < k < g(b), \\ -1 + k h^{-1}(k) - H(h^{-1}(k)) - \ln k, & k < g(a) \text{ or } g(b) < k. \end{cases} \quad (3.49)$$

Recalling from section 3.3 the relations $g(x) = h(x)$ and $G(x) = H(x)$ for $x \in \{a, b\}$, we see that the different pieces of ω combine to a smooth function (figure 1), since each piece has derivative $\omega'(k) = R(k)$.

3.6. Absence of phase transition

Related to the material of sections 3.4 and 3.5, there exist mathematical results [15] by Guionnet and Maida (GM), which we now discuss briefly. Using large deviations techniques, GM control the large- N asymptotics of the spherical integral (1.5) under the condition that the empirical measure (i.e. the sum of δ -functions located at the eigenvalues) of a sequence of diagonal $N \times N$ matrices X_N converges weakly ($N \rightarrow \infty$) to a compactly supported density of states ν with $\text{supp } \nu = [a, b]$. In contrast to the present setting, GM stipulate that all eigenvalues of X_N remain strictly confined to the interval $[a, b]$. In Coulomb gas language, this means that infinitely high potential walls are placed at the boundaries of the interval $[a, b]$.

With these assumptions, GM prove that $N^{-1} \ln I_{X_N}(k)$ converges to our result $\omega(k) = \int_0^k R(t) dt$ in the small- k range $g(a) < k < g(b)$. For k outside this range, however, they establish a qualitatively different behavior, separated from the small- k behavior by phase transitions at the critical points $k = g(a)$ and $k = g(b)$. Please be assured that there is no contradiction with our result (3.47), as the underlying model assumptions are different. As we

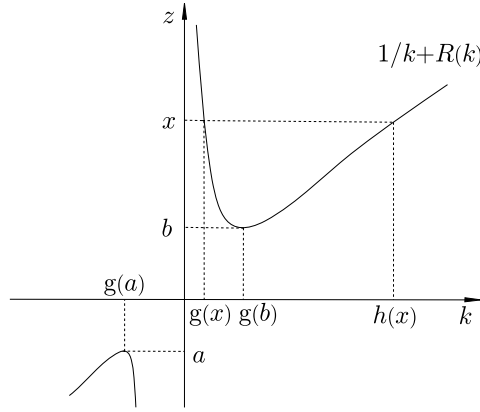


Figure 1. The saddle trajectories $k \mapsto g^{-1}(k)$ for $g(a) < k < g(b)$, and $k \mapsto h^{-1}(k)$ for $k < g(a)$ or $g(b) < k$, piece together at the critical points $g(a)$, $g(b)$ to yield a smooth function $k \mapsto k^{-1} + R(k)$.

have seen, for large values of k , the strong external field term e^{Nkx} has the effect of expelling one charge from the fluid of the other charges. Such a dissociation phenomenon is forbidden by the assumptions of GM.

Still, in view of the phase transitions found by GM and the rather different integral representations (3.29) and (3.42) appearing in our treatment, the reader may wonder why it is that the large- N asymptotics for the small- k and large- k regions match perfectly to give a smooth result for $\omega(k)$. Let us now give a simple argument why this *must* be the case under our assumptions on the confining potential V .

Consider the mapping $\pi : \text{End}(\mathbb{C}^N) \rightarrow \mathbb{R}$ which sends H to its projection $\pi(H) = x$ to the one-dimensional subspace with projector Π . Imagine computing the push forward of μ_N by this mapping,

$$e^{-N \text{Tr } V(H)} dH \xrightarrow{\pi} e^{-N \Gamma(x) + O(N^0)} dx, \quad (3.50)$$

for large N . In the language of quantum field theory, one would call Γ the (large- N limit of the) generating function for the one-particle irreducible vertex functions.

Since V is uniformly convex (i.e. its second derivative is bounded below by a positive constant) and analytic, so is Γ . Indeed, the latter results from the former as the fixed point of a renormalization-group-type recursive process of integrating out variables. Now,

$$\begin{aligned} \omega(k) &= \lim_{N \rightarrow \infty} N^{-1} \ln \int e^{Nk \text{Tr } \Pi H} d\mu_N(H) \\ &= \lim_{N \rightarrow \infty} N^{-1} \ln \int e^{Nkx - N \Gamma(x)} dx = (kx - \Gamma(x))|_{x: \Gamma'(x)=k}. \end{aligned} \quad (3.51)$$

Thus, our function ω is the Legendre transform of Γ . Since $\Gamma(x)$ is analytic and uniformly convex as a function of $x \in \mathbb{R}$, the Legendre transform $\omega(k)$ must be analytic as a function of $k \in \mathbb{R}$, ruling out any possibility for a phase transition to occur.

Moreover, under the stated conditions on V , one can show that the R -transform $R(k)$ is an entire function of $k \in \mathbb{C}$. Also, in the present setting there is no reason to think that ω should

have any singularities in the complex k -plane. Hence, by the identity principle (i.e. uniqueness of analytic continuation), we expect that

$$\omega(k) = \int_0^k R(t) dt \quad (3.52)$$

holds for all $k \in \mathbb{C}$. This is the result we propose.

4. Fermion–fermion sector

Our argument so far deals with the rank-1 case $K = \varphi \otimes \tilde{\varphi} = k\Pi$. It extends to the higher-rank case of several replicas $\varphi_1, \dots, \varphi_p$ without difficulty. However, as we have seen in section 2, the supersymmetry method requires as input the characteristic function $\Omega(K)$ for $K = \varphi \otimes \tilde{\varphi} + \psi \otimes \tilde{\psi}$, which includes the fermion–fermion expression $\psi \otimes \tilde{\psi}$ built from $\psi \in \mathbb{C}^N \otimes \wedge((\mathbb{C}^N)^*)$ and $\tilde{\psi} \in (\mathbb{C}^N)^* \otimes \wedge(\mathbb{C}^N)$. The reasoning of section 3 does not apply to that second summand. Therefore, we now develop another scheme, concentrating again on the simple case of a single replica, $K = \psi \otimes \tilde{\psi}$.

So, in this section we make a study of $\Omega(K) = \int e^{\text{Tr} HK} d\mu_N(H)$ for $K = \psi \otimes \tilde{\psi}$. Since the probability measure μ_N is invariant under conjugation $H \mapsto gHg^{-1}$ for $g \in U_N$, the characteristic function $\Omega(\psi \otimes \tilde{\psi})$ has the property of depending only on the GL_N -invariant $\langle \tilde{\psi}, \psi \rangle$. Although this property is not explicit from the definition of Ω , it can be made so by averaging *ad hoc* over U_N -orbits. Hence, we compute

$$I_N(\psi \otimes \tilde{\psi}; H) := \int_{U_N} e^{\text{Tr}(\psi \otimes \tilde{\psi}) g^{-1} H g} dg = \int_{U_N} e^{-\langle \tilde{\psi} g^{-1}, H g \psi \rangle} dg \quad (4.1)$$

as a useful preparation for the subsequent process of integrating against $d\mu_N(H)$.

We claim that the integral (4.1) has the following alternative expression:

$$I_N(\psi \otimes \tilde{\psi}; H) = N!^{-1} \int_0^\infty \text{Det}(t - \langle \tilde{\psi}, \psi \rangle H) e^{-t} dt. \quad (4.2)$$

This formula is proved in the next subsection. Having established it, we will determine the large- N asymptotics of $N^{-1} \ln \Omega(N\psi \otimes \tilde{\psi})$ in section 4.2.

4.1. Proof of formula (4.2)

After expanding the integrand of (4.1) by the power series of the exponential function,

$$e^{-\langle \tilde{\psi} g^{-1}, H g \psi \rangle} = \sum_{m=0}^N \frac{(-1)^m}{m!} \langle \tilde{\psi} g^{-1}, H g \psi \rangle^m, \quad (4.3)$$

our task is to compute the integrals $\int_{U_N} \langle \tilde{\psi} g^{-1}, H g \psi \rangle^m dg$. To do so, it is helpful to recall some facts from the representation theory of GL_N .

The irreducible representations of GL_N are labeled by highest weights λ which are sequences of integers $\lambda \equiv (\lambda_1, \lambda_2, \dots, \lambda_N)$ with $\lambda_1 \geq \lambda_2 \geq \dots \geq \lambda_N$. Here, we will need only those representations which extend holomorphically to $\text{End}(\mathbb{C}^N)$; these are distinguished by $\lambda_N \geq 0$. The character of the representation ρ_λ with highest weight λ is denoted by $s_\lambda(g) = \text{Tr} \rho_\lambda(g)$ and is called a Schur function. The Schur functions form an orthonormal system w.r.t. Haar measure dg for U_N of total mass $\int_{U_N} dg = 1$:

$$\int_{U_N} s_\lambda(g^{-1}) s_{\lambda'}(g) dg = \delta_{\lambda\lambda'}. \quad (4.4)$$

To do the integrals $\int_{U_N} \langle \tilde{\psi} g^{-1}, H g \psi \rangle^m dg$, our first step is to recognize the integrand as a special Schur function:

$$(-\langle \tilde{\psi} g^{-1}, H g \psi \rangle)^m = s_{[1^m]}((\psi \otimes \tilde{\psi}) g^{-1} H g), \quad (4.5)$$

where $\lambda = [1^m]$ is the highest weight given by

$$\lambda_1 = \lambda_2 = \dots = \lambda_m = 1, \quad \lambda_{m+1} = \dots = \lambda_N = 0. \quad (4.6)$$

In the second step, we use the general identity

$$\begin{aligned} \int_{U_N} s_\lambda(K g^{-1} H g) dg &= \int_{U_N} \text{Tr } \rho_\lambda(K) \rho_\lambda(g^{-1}) \rho_\lambda(H) \rho_\lambda(g) dg \\ &= \frac{\text{Tr } \rho_\lambda(K) \text{Tr } \rho_\lambda(H)}{\text{Tr } \rho_\lambda(\text{Id}_N)} = \frac{s_\lambda(K) s_\lambda(H)}{s_\lambda(\text{Id}_N)}, \end{aligned} \quad (4.7)$$

which derives from the fact that ρ_λ is a representation.

We now establish (4.5). For this we start from the relation

$$\text{Det}(\text{Id}_N - K) = \sum_{m=0}^N (-1)^m s_{[1^m]}(K), \quad (4.8)$$

which is a special case of what is sometimes called the dual Cauchy identity [5]. Then, substituting $K = \psi \otimes \tilde{\psi}$, we manipulate the left-hand side as follows:

$$\begin{aligned} \text{Det}(\text{Id}_N - \psi \otimes \tilde{\psi}) &= e^{\text{Tr} \ln(\text{Id}_N - \psi \otimes \tilde{\psi})} = e^{-\sum_{m=1}^N m^{-1} \text{Tr}(\psi \otimes \tilde{\psi})^m} \\ &= e^{+\sum_{m=1}^N m^{-1} \langle \tilde{\psi}, \psi \rangle^m} = e^{-\ln(1 - \langle \tilde{\psi}, \psi \rangle)} = \sum_{m=0}^N \langle \tilde{\psi}, \psi \rangle^m. \end{aligned} \quad (4.9)$$

By combining equations, we have

$$\sum_{m=0}^N \langle \tilde{\psi}, \psi \rangle^m = \sum_{m=0}^N (-1)^m s_{[1^m]}(\psi \otimes \tilde{\psi}). \quad (4.10)$$

Since the Schur function $s_{[1^m]}(K)$ is a homogeneous polynomial of degree m in the matrix entries of K , the desired relation (4.5) follows on replacing $\tilde{\psi} \rightarrow \tilde{\psi} g^{-1} H g$.

We are now in a position to compute our integral:

$$\int_{U_N} (-\langle \tilde{\psi} g^{-1}, H g \psi \rangle)^m dg = \int_{U_N} s_{[1^m]}(\psi \otimes \tilde{\psi} g^{-1} H g) dg = \frac{s_{[1^m]}(\psi \otimes \tilde{\psi}) s_{[1^m]}(H)}{s_{[1^m]}(\text{Id}_N)}, \quad (4.11)$$

where we used (4.7). On the right-hand side we have the simplification $s_{[1^m]}(\psi \otimes \tilde{\psi}) = (-\langle \tilde{\psi}, \psi \rangle)^m$ from (4.5), and the denominator is the dimension of the representation:

$$s_{[1^m]}(\text{Id}_N) = \dim \wedge^m(\mathbb{C}^N) = \frac{N!}{m!(N-m)!}. \quad (4.12)$$

Thus, we obtain the following expression for I_N :

$$\begin{aligned} I_N(\psi \otimes \tilde{\psi}; H) &= \sum_{m=0}^N \frac{1}{m!} \int_{U_N} (-\langle \tilde{\psi} g^{-1}, H g \psi \rangle)^m dg \\ &= \frac{1}{N!} \sum_{m=0}^N (-1)^m (N-m)! \langle \tilde{\psi}, \psi \rangle^m s_{[1^m]}(H). \end{aligned} \quad (4.13)$$

We finally resum this expansion. For that, we express the factorial as $(N - m)! = \int_0^\infty t^{N-m} e^{-t} dt$ and use the dual Cauchy identity (4.8) in reverse to arrive at

$$\begin{aligned} I_N(\psi \otimes \tilde{\psi}; H) &= \int_0^\infty \frac{t^N}{N!} \sum_{m=0}^N (-1/t)^m \langle \tilde{\psi}, \psi \rangle^m s_{[1^m]}(H) e^{-t} dt \\ &= N!^{-1} \int_0^\infty \text{Det}(t - \langle \tilde{\psi}, \psi \rangle H) e^{-t} dt. \end{aligned} \quad (4.14)$$

This completes the proof.

4.2. Large- N limit

Recall the definition

$$\Omega(N\psi \otimes \tilde{\psi}) = \int I_N(N\psi \otimes \tilde{\psi}; H) d\mu_N(H). \quad (4.15)$$

As was reviewed in section 2, in the superbosonization method one lifts $\Omega(N\psi \otimes \tilde{\psi})$ to a holomorphic function $k \mapsto \widehat{\Omega}(Nk)$ of a complex variable $k \in \mathbb{C}$. By substituting $t \rightarrow Nt$ in (4.2) and changing the order of integration, we see that

$$\widehat{\Omega}(Nk) = \frac{N^{N+1}}{N!} \int_0^\infty \left(\int \text{Det}(t - kH) d\mu_N(H) \right) e^{-Nt} dt \quad (4.16)$$

is such a function. We now tackle the task of determining its large- N limit.

Stirling's formula gives $\lim_{N \rightarrow \infty} N^{-1} \ln(N^{N+1}/N!) = 1$, and by the type of reasoning of section 3 we find the large- N approximation

$$\int \text{Det}(t - kH) d\mu_N(H) \sim e^{N \int_a^b \ln(t - kx) dv(x)}. \quad (4.17)$$

We now take $N \rightarrow \infty$ to define

$$\phi(k) := \lim_{N \rightarrow \infty} N^{-1} \ln \widehat{\Omega}(Nk). \quad (4.18)$$

Note that $\phi(0) = 0$, and by combining the above we have

$$\phi(k) = 1 + \lim_{N \rightarrow \infty} N^{-1} \ln \int_0^\infty e^{-Nt + N \int_a^b \ln(t - kx) dv(x)} dt. \quad (4.19)$$

The integral on the right-hand side is a close cousin of the integral (3.29) and, in fact, has essentially the same saddle point, $t = k g^{-1}(k)$. The overall sign in the exponent is reversed, but at the same time we are now integrating over t in the direction of the real axis, while the path of steepest descent in the case of (3.29) was along the imaginary direction. Thus, the saddle analysis is essentially the same and need not be repeated here. We just quote the result:

$$\phi(k) = 1 - k g^{-1}(k) + \int_a^b \ln(k g^{-1}(k) - kx) dv(x). \quad (4.20)$$

This is exactly the negative of $\omega(k)$ in (3.34). Hence we conclude (cf (3.52)) that

$$\phi(k) = - \int_0^k R(t) dt. \quad (4.21)$$

Returning to the original meaning of $k = \langle \tilde{\psi}, \psi \rangle$, we state our final result as follows:

$$\lim_{N \rightarrow \infty} N^{-1} \ln \Omega(N\psi \otimes \tilde{\psi}) = - \sum_{n \geq 1} \frac{c_n}{n} \langle \tilde{\psi}, \psi \rangle^n. \quad (4.22)$$

In section 3, we achieved a satisfactory understanding of the large- N behavior of $N^{-1} \ln \Omega(NK)$ for a rank-1 operator $K = \varphi \otimes \tilde{\varphi}$. The current section does the same for $K = \psi \otimes \tilde{\psi}$. In both cases, our treatment carries over without difficulty to K of higher rank (or several replicas).

However, the supersymmetry method calls for $\Omega(NK)$ with K of the *mixed* type $K = \varphi \tilde{\varphi} + \psi \tilde{\psi}$, cf (2.22). The techniques used in sections 3 and 4 are quite different, and at the present time we do not know how to combine them to handle the mixed situation. For this reason, we now turn to a completely different approach.

5. Large- N combinatorial theory of $\Omega(K)$

In the present section, we launch yet another attack, combining the planar graph limit of perturbation theory with Speicher's combinatorial approach to the free cumulants. An early physics paper in this direction is [28].

5.1. From moments to cumulants

We begin by reviewing the usual connection between the moments and the cumulants of a random number, and afterwards state the analog of this connection in the setting of free probability theory.

5.1.1. Commutative case ($N = 1$). Although our interest is in $N \times N$ random matrices in the limit $N \rightarrow \infty$, we temporarily set $N = 1$ and review the connection between moments and cumulants for the case of a single random variable $x \in \mathbb{R}$ with probability measure μ . The moments m_n of μ ,

$$m_n = \int_{\mathbb{R}} x^n d\mu(x), \quad (5.1)$$

are generated by the characteristic function,

$$\Omega(k) = \int_{\mathbb{R}} e^{kx} d\mu(x) = \sum_{n=0}^{\infty} m_n \frac{k^n}{n!}, \quad \Omega(0) = 1, \quad (5.2)$$

while the cumulants c_n are generated by the logarithm of $\Omega(k)$:

$$\ln \Omega(k) = \sum_{n=1}^{\infty} c_n \frac{k^n}{n!}. \quad (5.3)$$

Sometimes one wants to express the moments in terms of the cumulants or vice versa. Switching between the two descriptions is an exercise in basic combinatorics and the Leibniz product rule of differential calculus. Let us do this exercise as a warm up for a more strenuous calculation to come in section 5.5 below.

We start by writing the n th moment as an n th derivative at $k = 0$:

$$m_n = \left. \frac{d^n}{dk^n} e^{\ln \Omega(k)} \right|_{k=0} = \left(e^{-\ln \Omega(k)} \frac{d}{dk} \circ e^{\ln \Omega(k)} \right)^n \Big|_{k=0}. \quad (5.4)$$

By the Leibniz rule this becomes

$$m_n = \left(\frac{d}{dk} + \frac{\Omega'(k)}{\Omega(k)} \right)^n \Big|_{k=0}. \quad (5.5)$$

From this formula, by multiplying out factors using the distributive law, we generate a sum of terms which are in one-to-one correspondence with partitions $p \in \Pi(n)$ of the set $\{1, 2, \dots, n\}$.

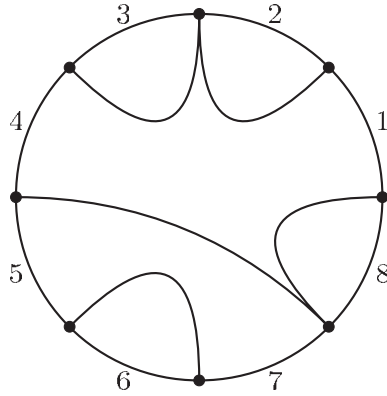


Figure 2. Example of a non-crossing partition $p = \{1, 5, 8\} \cup \{2, 3, 4\} \cup \{6, 7\}$ for $n = 8$. 0-cells belonging to the same block of the partition are connected by lines. These lines divide the disk into sectors (or 2-cells).

Indeed, we are to break up (or partition) n identical factors into $v_l(p)$ blocks of integer length $l \geq 1$ subject to $\sum_l l v_l(p) = n$. Each block of length l consists of one logarithmic derivative $\Omega'(k)/\Omega(k)$ together with $l - 1$ derivatives d/dk acting on it before evaluation at $k = 0$. Now since each block of length l contributes a cumulant $c_l = (d/dk)^l \ln \Omega(k)|_{k=0}$, we obtain a formula expressing the moment,

$$m_n = \sum_{p \in \Pi(n)} \prod_{l \geq 1} c_l^{v_l(p)}, \quad (5.6)$$

as a sum over partitions $p \in \Pi(n)$ in terms of the cumulants c_1, \dots, c_n .

5.1.2. Speicher's formula ($N = \infty$). We return to the case of $N \times N$ random matrices H with probability measure μ_N and recall the definition (3.1) of the moments $m_{n,N}$ and their large- N limits $m_n = \lim_{N \rightarrow \infty} m_{n,N}$. We also recall the definition (3.6) of the free cumulants c_n by the Voiculescu R -transform.

It turns out that the large- N moments m_n are expressible in terms of the free cumulants c_l (with $l \leq n$) by a combinatorial formula closely analogous to (5.6). Due to Speicher [19], this formula reads

$$m_n = \sum_{p \in \text{NC}(n)} \prod_{l \geq 1} c_l^{v_l(p)}. \quad (5.7)$$

It differs from (5.6) only in that the sum over all partitions $p \in \Pi(n)$ has been restricted to the subset of *non-crossing* partitions $p \in \text{NC}(n)$. A partition p is called non-crossing if for any two pairs $\{i_1, i_2\}$ and $\{j_1, j_2\}$ taken from any two different blocks of p , it never happens that

$$i_1 < j_1 < i_2 < j_2. \quad (5.8)$$

Informally speaking, this means that if we arrange the numbers $1, \dots, n$ in cyclic order around the boundary of a disk and connect the numbers of each block of the partition by lines via the interior of the disk in a 'minimal' way, then the lines associated with different blocks do not cross each other. See figure 2 above for an example.

Consider the single-block (or trivial) partition p , where $v_1(p) = \dots = v_{n-1}(p) = 0$ and $v_n(p) = 1$. This partition is non-crossing and contributes $\prod_{l \geq 1} c_l^{v_l(p)} = c_n$ to Speicher's formula (5.7) for the moment m_n . Thus (5.7) has the general structure

$$m_n = c_n + P_{n-1}(c_1, c_2, \dots, c_{n-1}), \quad (5.9)$$

where P_{n-1} is a polynomial in the free cumulants of order $n - 1$ or less. It follows that relation (5.7) can be inverted to express c_n in terms of the moments m_1, \dots, m_n . In this sense, formula (5.7) may serve to define the free cumulants in terms of the large- N moments. Speicher [19] has proved (under suitable conditions on μ_N) that this combinatorial definition is equivalent to Voiculescu's analytic definition of $k \mapsto R(k) = \sum c_n k^{n-1}$ via inversion of $z \mapsto g(z) = \sum m_n z^{-n-1}$.

5.2. Cumulant tensor

After these preliminaries, we will outline a combinatorial description of the large- N limit of $N^{-1} \ln \Omega(NK)$ by way of expansion in powers of K (restricting the numerical part of K to be of finite rank). For this purpose, we fix some degree $n \geq 1$ and consider the full tensor of cumulants

$$C_{j_1 \dots j_n}^{i_1 \dots i_n} = \left. \frac{\partial^n}{\partial K_{i_1 j_1} \partial K_{i_2 j_2} \dots \partial K_{i_n j_n}} \ln \Omega(K) \right|_{K=0}. \quad (5.10)$$

We refer to the set of components $C_{j_1 \dots j_n}^{i_1 \dots i_n}$ as the ‘cumulant tensor’ (at degree n) for short. Please note that our simple notation does not display the dependence which $C_{j_1 \dots j_n}^{i_1 \dots i_n}$ has on the random matrix dimension N .

For a general probability measure μ_N with no symmetries (and $N \geq n$), we expect all components of this tensor to be independent of each other. However, we shall now assume a probability distribution of the U_N -invariant form $e^{-N \text{Tr } V(H)} dH$. The characteristic function then inherits the invariance property $\Omega(K) = \Omega(g^{-1} K g)$ for $g \in U_N$. It follows that the set of components $C_{j_1 \dots j_n}^{i_1 \dots i_n}$ constitute an invariant tensor of U_N (or by analytic extension, of $GL_N \equiv GL_N(\mathbb{C})$, the complexification of U_N):

$$C_{j_1 \dots j_n}^{i_1 \dots i_n} = \sum_{i'_1, \dots, i'_n, j'_1, \dots, j'_n} g_{i'_1}^{i_1} \dots g_{i'_n}^{i_n} C_{j'_1 \dots j'_n}^{i'_1 \dots i'_n} (g^{-1})_{j'_1}^{j_1} \dots (g^{-1})_{j'_n}^{j_n}, \quad (5.11)$$

$g \in GL_N$. By a classical result of invariant theory due to Weyl [27], one then knows that $C_{j_1 \dots j_n}^{i_1 \dots i_n}$ is nonzero only if the numbers $\{j_1, \dots, j_n\}$ agree as a set with the set $\{i_1, \dots, i_n\}$, i.e. if there exists an element π of the symmetric group S_n such that $j_l = i_{\pi(l)}$ for $l = 1, \dots, n$. Thus, our cumulant tensor can be expressed as a sum over permutations:

$$C_{j_1 \dots j_n}^{i_1 \dots i_n} = \sum_{\pi \in S_n} \gamma_{n, N}(\pi) \prod_{l=1}^n \delta_{i_l, j_{\pi(l)}}. \quad (5.12)$$

Moreover, by its definition (5.10) as an n th symmetric derivative, $C_{j_1 \dots j_n}^{i_1 \dots i_n}$ is invariant w.r.t. any permutation $\sigma \in S_n$ of the index pairs, $(i_l, j_l) \mapsto (i_{\sigma(l)}, j_{\sigma(l)})$, $l = 1, \dots, n$. It follows that we may assume the coefficients $\gamma_{n, N}(\pi)$ to be conjugacy class functions, i.e. $\gamma_{n, N}(\pi) = \gamma_{n, N}(\sigma^{-1} \pi \sigma)$ for all $\sigma \in S_n$.

Recall now from the basic theory of the symmetric group that the conjugacy class $[\pi]$ of an element $\pi \in S_n$ is determined by its cycle structure; more precisely, by the set of non-negative integers $v_1(\pi), v_2(\pi), \dots, v_n(\pi)$ subject to $\sum_l l v_l(\pi) = n$, where $v_l(\pi)$ is the number of cycles of π of length l . An important role in the following will be played by the conjugacy class, $[\text{irr}]$, of all irreducible cycles—by this we mean the conjugacy class of elements $\pi \in S_n$ with $v_1(\pi) = \dots = v_{n-1}(\pi) = 0$ and $v_n(\pi) = 1$.

5.3. Large- N hypothesis

What has been said so far is true for all N , but now we take the large- N limit and claim the following *large- N hypothesis*:

$$\lim_{N \rightarrow \infty} N^{n-1} \gamma_{n,N}(\pi) = \begin{cases} c_n & \text{if } [\pi] = [\text{irr}], \\ 0 & \text{else.} \end{cases} \quad (5.13)$$

In words: $N^{n-1} \gamma_{n,N}(\pi)$ goes to zero for $N \rightarrow \infty$ unless $\pi \in S_n$ belongs to the conjugacy class of one irreducible cycle of length n . (If so, the cumulant tensor of degree n is determined by a single number c_n for $N \rightarrow \infty$. We shall see that c_n is in fact the n th free cumulant, vindicating our notation.) The hypothesis (5.13) is present in [6], theorem 4.5. To make our paper self-contained, we now offer some motivation (if not rigorous justification) of this hypothesis from perturbation theory.

5.4. Perturbation theory argument

We here assume the exponent of our probability distribution $e^{-N \text{Tr } V(H)} dH$ to be of the form

$$\text{Tr } V(H) = \frac{1}{2\sigma^2} \text{Tr } H^2 + \text{Tr } W(H), \quad (5.14)$$

where the parameter σ^2 is small, so that the interaction (or non-quadratic part) $\text{Tr } W(H)$ can be treated as a perturbation. In order to develop a perturbation expansion in the small parameter σ^2 , we single out the Gaussian (or GUE) measure

$$d\mu_{\text{GUE}}(H) = e^{-\frac{N}{2\sigma^2} \text{Tr } H^2} dH, \quad (5.15)$$

with Lebesgue measure dH normalized by $\int d\mu_{\text{GUE}}(H) = 1$. Our goal is to compute

$$\Omega(NK) = \int e^{-N \text{Tr } W(H) + N \text{Tr } HK} d\mu_{\text{GUE}}(H). \quad (5.16)$$

We take it for granted that $\Omega(0) = \int e^{-N \text{Tr } W(H)} d\mu_{\text{GUE}}(H) = 1$ by the choice of normalization constant $W(0)$.

Now, by passing to the logarithm on both sides of the equation and shifting the integration variable $H \rightarrow H + \sigma^2 K$, we obtain

$$\ln \Omega(NK) = \frac{N\sigma^2}{2} \text{Tr } K^2 + \ln \int e^{-N \text{Tr } W(H + \sigma^2 K)} d\mu_{\text{GUE}}(H). \quad (5.17)$$

Next we use the trick of writing the GUE measure as the result of applying the heat semigroup (generated by the Laplacian $\Delta = \sum \partial^2 / \partial H_{ij} \partial H_{ji}$) to the Dirac δ -distribution with unit mass localized at $H = 0$:

$$d\mu_{\text{GUE}}(H) = (e^{\sigma^2 \Delta / 2N} \delta)(H). \quad (5.18)$$

We then use partial integration to bring $N^{-1} \ln \Omega(NK)$ into the form

$$N^{-1} \ln \Omega(NK) = \frac{\sigma^2}{2} \text{Tr } K^2 + N^{-1} \ln (e^{\sigma^2 \Delta / 2N} e^{-N \text{Tr } W(H)}) \Big|_{H=\sigma^2 K}. \quad (5.19)$$

This expression serves as our starting point to develop the perturbation expansion as follows (we give only a brief sketch, referring to the literature [4] for greater detail).

One expands the exponential function $e^{-N \text{Tr } W(H)}$ by its power series. Using standard graphical code, one represents each monomial $\text{Tr } H^l$ in $\text{Tr } W(H)$ by an l -vertex. One also expands the heat operator $e^{\sigma^2 \Delta / 2N}$ and represents each action of the Laplacian Δ by an edge. In this way, the contributions to the r.h.s. of (5.19) are drawn as graphs.

Any given graph contributes with an overall power of $N^{\chi-1}$ where χ is the Euler characteristic of the graph, i.e. the number of vertices minus the number of edges plus the number of faces. Indeed, every vertex carries a factor of N , every edge comes with a factor of $N^{-1}\sigma^2$ and every face corresponds to a free summation variable, thereby contributing one factor of N . (To do this counting, we first delete the vertex legs that are saturated by the final substitution $H \rightarrow \sigma^2 K$.) Thus, the second term on the r.h.s. of (5.19) can be organized as a sum over topological sectors:

$$N^{-1} \ln \left(e^{\sigma^2 \Delta / 2N} e^{-N \text{Tr} W(H)} \right) \Big|_{H=\sigma^2 K} = \sum_{\chi} N^{\chi-1} \omega_{\chi}(K), \quad (5.20)$$

where $\omega_{\chi}(K)$ is the sum of all contributions from graphs with Euler characteristic χ .

By the linked cluster theorem, disconnected graphs cancel upon taking the logarithm. Now among the set of all connected graphs (with at least one substitution $H \rightarrow \sigma^2 K$), the Euler characteristic becomes maximal for planar graphs with the topology of a disk D , where all substitutions $H \rightarrow \sigma^2 K$ are arranged around the boundary of D . The Euler characteristic for such a graph is $\chi(D) = 1$; indeed, a triangle, say, has three vertices, three edges and one face, so $\chi = 3 - 3 + 1 = 1$.

The Euler characteristic of a non-planar graph is known to be smaller than the planar value $\chi(D) = 1$. There also exist planar graphs which have a topology different from that of a disk; examples are the annulus or a disk with several holes in its interior resulting in an ‘inner’ boundary. Again, the Euler characteristic of these non-disk planar graphs is smaller than 1. For an annulus A , one has $\chi(A) = \chi(D) - 1 = 0$, since there is one face missing as compared with the disk D .

The upshot of all this is that the leading contribution to (5.20) in the large- N limit is of order $O(N^0)$ and is given by the sum over all planar graphs with disk topology. Because these graphs are constructed by inserting every substitution $H \rightarrow \sigma^2 K$ into a single line (circulating around the boundary of the disk-shaped graph), they all produce single-trace contributions $\text{Tr} K^n$, $n \geq 1$. Perturbation theory thus leads us to expect

$$\lim_{N \rightarrow \infty} N^{-1} \ln \Omega(NK) = \omega_1(K) = \sum_{n=1}^{\infty} \frac{c_n}{n} \text{Tr} K^n. \quad (5.21)$$

The reason for writing the coefficient of $\text{Tr} K^n$ as c_n/n will become clear shortly.

It should be emphasized at this point that we are taking the limit $N \rightarrow \infty$ while keeping the rank of (the numerical part of) K finite. Non-disk (e.g. annular) planar graphs make contributions of the multi-trace form:

$$N^{-r} \text{Tr}(K^{n_1}) \text{Tr}(K^{n_2}) \cdots \text{Tr}(K^{n_r}) \text{Tr}(K^{n-n_1-n_2-\cdots-n_r}), \quad (5.22)$$

which would not become negligible in the large- N limit if we let $\text{Tr} K^n$ grow with N .

This ends our excursion into perturbation theory. Based on the result (5.21), which should even be valid beyond the domain of validity of perturbation theory (if only as a series expansion with finite radius of convergence), it is straightforward to compute the large- N limit of the cumulant tensor (5.10). Doing so with the help of (5.12), we immediately arrive at the large- N hypothesis (5.13). Indeed, in the process of applying the first derivative $\partial/\partial K_{i_1 j_{\pi(1)}}$ to $\text{Tr} K^n/n$, we have n factors of K to choose from and thus a freedom which cancels the factor $1/n$; application of the remaining $n-1$ derivatives $\partial/\partial K_{i_l j_{\pi(l)}}$ gives precisely the sum over irreducible permutations $\sum_{\pi \in [\text{irr}]} \prod_l \delta_{i_l, j_{\pi(l)}}$.

At the present stage, we cannot tell whether c_n indeed is the n th free cumulant, but this open question will be settled in the next subsection. Our strategy will be to show that the large- N hypothesis (5.13) implies Speicher’s formula (5.7). Since it is already known that the coefficients c_n of the latter formula are the free cumulants, the desired result follows.

5.5. Retrieving Speicher's formula

Just as in the case (5.4) of a random number, we can generate the moments (3.1) of the probability measure μ_N by differentiation of the characteristic function $\Omega(K) = e^{\text{Tr} H K} = \int e^{\text{Tr} H K} d\mu_N(H)$ at $K = 0$:

$$m_{n,N} = N^{-1} \sum_{i_1, \dots, i_n} \frac{\partial^n}{\partial K_{i_n i_{n-1}} \cdots \partial K_{i_2 i_1} \partial K_{i_1 i_n}} e^{\text{Tr} H K} \Big|_{K=0}, \quad (5.23)$$

where indices are arranged in cyclic order and summed in order to manufacture the expectation of a single trace $\text{Tr} H^n$. By the identity

$$e^{-\text{Tr} H K} \frac{\partial}{\partial K_{i_k i_{k-1}}} e^{\text{Tr} H K} = \frac{\partial}{\partial K_{i_k i_{k-1}}} + \frac{\partial \ln \Omega}{\partial K_{i_k i_{k-1}}}, \quad (5.24)$$

the expression for $m_{n,N}$ is cast in the form

$$m_{n,N} = N^{-1} \sum_{i_1, \dots, i_n} \left(\frac{\partial}{\partial K_{i_n i_{n-1}}} + \frac{\partial \ln \Omega}{\partial K_{i_n i_{n-1}}} \right) \cdots \left(\frac{\partial}{\partial K_{i_1 i_n}} + \frac{\partial \ln \Omega}{\partial K_{i_1 i_n}} \right) \Big|_{K=0}. \quad (5.25)$$

In the following, we adopt the convention of assigning to $\partial/\partial K_{i_k i_{k-1}}$ the number k .

Now, by evaluating the derivatives at $K = 0$, we get an expression which is a polynomial in the cumulant tensor of (5.10). The summands of the polynomial generated in this way are in one-to-one correspondence (for fixed indices i_1, \dots, i_n and by the bijection $\partial/\partial K_{i_k i_{k-1}} \leftrightarrow k$) with partitions $p \in \Pi(n)$, where each block of length l of p corresponds to a cumulant tensor of degree l . For example, the following partition $p \in \text{NC}(8) \subset \Pi(8)$,

$$p = \{1, 5, 8\} \cup \{2, 3, 4\} \cup \{6, 7\} \quad (5.26)$$

contributes to $m_{8,N}$ as

$$N^{-1} \sum_{i_1, \dots, i_8} C_{i_8 i_4 i_7}^{i_1 i_5 i_8} C_{i_1 i_2 i_3}^{i_2 i_3 i_4} C_{i_5 i_6}^{i_6 i_7}. \quad (5.27)$$

5.5.1. Contribution from non-crossing partitions. As a first step (which will turn out to be the main step), we compute the contribution to (5.25) from the non-crossing partitions $\text{NC}(n)$, using the relations (5.10), (5.12) and the large- N hypothesis (5.13).

So, let $p \in \text{NC}(n)$. To prepare for the task of counting powers of N , we will associate with p a 2-complex $\Sigma(p)$ as follows. Let D be (any) disk and divide the boundary line of D into n segments numbered in counterclockwise order by $1, \dots, n$. These segments shall be 1-cells of the 2-complex $\Sigma(p)$ to be constructed. Each pair $(k, k-1)$ of consecutive segments represents one partial derivative $\partial/\partial K_{i_k i_{k-1}}$, which we graphically depict by the boundary point (also numbered by k) between the two segments. These $n =: d_0$ points separating consecutive segments are the 0-cells of $\Sigma(p)$.

The partition p has not yet been used; but now, if l numbers taken from the set $\{1, \dots, n\}$ constitute one block of p , we draw $l-1$ arcs across D to connect the members of that block (or rather, the numbered 0-cells assigned to them) with one another. We take each such arc to be another 1-cell of $\Sigma(p)$. Note that the total number of 1-cells of $\Sigma(p)$ is

$$d_1(p) = n + \sum_{l \geq 1} (l-1) v_l(p). \quad (5.28)$$

Because the partition p is non-crossing, the lines of the 1-cells of $\Sigma(p)$ divide the area of the disk D into sectors. We take these sectors to be the 2-cells of the complex $\Sigma(p)$ and denote their total number by $d_2(p)$. Figure 2 shows the result of this construction for the

example given above. (Moreover, it is clear that any choice of orientation for the 1- and 2-cells of $\Sigma(p)$ turns $\Sigma(p)$ into a differential complex $(\Sigma(p), \partial)$ with boundary operator ∂ . It follows that $(\Sigma(p), \partial)$ has an Euler characteristic, which can be computed as the alternating sum $d_0 - d_1(p) + d_2(p)$.)

We are now in a position to evaluate the contribution to (5.25) from our fixed partition $p \in \text{NC}(n)$. According to the definition (5.10), each block of length l of derivatives $\partial/\partial K_{i_k i_{k-1}}$ encodes one cumulant tensor of degree l . By the identity (5.12) and the hypothesis (5.13) the large- N leading contribution of each such block is a factor of $N^{-l+1} c_l$ times the sum over irreducible permutations $\sum_{\pi \in [\text{irr}]} \prod \delta_{i_k, j_{\pi(k)}}$. Note that the total power of N from the product of these factors is

$$N^{-\sum (l-1)v_l(p)} = N^{d_0 - d_1(p)}. \quad (5.29)$$

We still need to do the sum over indices i_1, i_2, \dots, i_n for the product of Kronecker-delta symbols. Recall that by (5.12) the set of lower indices of a nonzero component of the cumulant tensor must be the same as its set of upper indices. This constraint forces some of the indices to be equal. (For our example (5.27), we have $i_1 = i_4$ and $i_5 = i_7$.) There is a graphical meaning for these constraints: $i_a = i_b$ if the two 1-cells numbered by $a, b \in \{1, \dots, n\}$ lie in the boundary of the same 2-cell of our complex $\Sigma(p)$.

Next we observe that for each block or cumulant tensor there exists just one large- N optimal permutation $\pi \in S_l$ in the sum of (5.12)—this is the shift permutation, or translation by one unit; it is optimal because it produces no further constraints and hence yields the maximal power of N from index sums.

We finally calculate the index sum: each of the $d_2(p)$ 2-cells of $\Sigma(p)$ amounts to one free index giving a factor of N ; there are no extra combinatorial factors, as the optimal permutation is unique for each block of p ; hence, the index sum equals $N^{d_2(p)}$. It follows that the total contribution to (5.25) from $p \in \text{NC}(n)$ is $\prod c_l^{v_l(p)}$ multiplied by

$$N^{d_0 - d_1(p) + d_2(p)} = N^{\chi(\Sigma(p))}. \quad (5.30)$$

Now the Euler characteristic of a disk D is $\chi(D) = 1$. Therefore, since our complex $\Sigma(p)$ shares with D its simplicial homology by construction, we have the relation

$$\chi(\Sigma(p)) = d_0 - d_1(p) + d_2(p) = 1. \quad (5.31)$$

Thus, the total power is N^1 , which is canceled by the normalization factor N^{-1} in (5.25).

In summary, the result of summing all contributions from non-crossing partitions is

$$m_{n,N} = \sum_{p \in \text{NC}(n)} \prod_{l=1}^n c_l^{v_l(p)} + \dots, \quad (5.32)$$

where the dots signify corrections from partitions $p \notin \text{NC}(n)$ and from the multi-trace terms indicated in (5.22).

5.5.2. Correction terms. The corrections to (5.32) become negligible in the limit $N \rightarrow \infty$, and we now briefly discuss why. For that, we slightly expand our graphical representation. Let still $p \in \text{NC}(n)$ and consider once more the associated 2-complex $\Sigma(p)$. Now, however, replace the arcs for each block of p of length l by a ‘blob’—the sum of all perturbation theory graphs for the cumulant tensor of degree l —with l external lines connecting it to the l members of that block. The resulting graph is planar (see figure 3 for how it looks in the case of our example (5.27)). It is planar because the partition p was taken to be non-crossing and the blobs were chosen to be full disks, as opposed to disks with one or several holes in them.

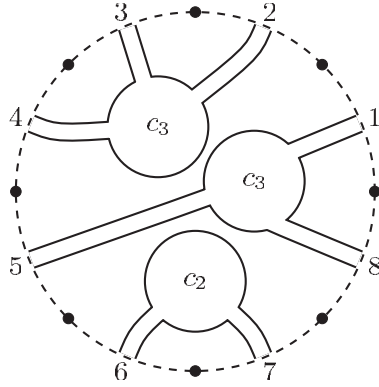


Figure 3. Another drawing of the non-crossing partition of figure 2. Blocks of size l are now drawn as ‘blobs’ with l arms. Each such block represents a free cumulant c_l .

Now, inserting any correction of the multi-trace form (5.22) amounts to changing the topology of a blob from disk to annulus or higher genus. Our graph then is no longer planar. The same goes for the replacement of $p \in \text{NC}(n)$ by $p \notin \text{NC}(n)$: the resulting graph cannot be planar, as some lines emanating from the blobs must cross. As should be plausible by now, this loss of planarity results in the loss of at least one factor of N . We therefore claim that all corrections vanish in the large- N limit:

$$m_n = \lim_{N \rightarrow \infty} m_{n,N} = \sum_{p \in \text{NC}(n)} \prod_{l=1}^n c_l^{v_l(p)}. \quad (5.33)$$

This is Speicher’s formula (5.7), provided that we identify the coefficients c_n —unknowns for us up to now—with the free cumulants of free probability theory.

In summary, assuming that (5.21) holds, we have argued that the coefficients c_n must be the free cumulants. This concludes our perturbation theory argument in support of (5.21). Compared to the (non-perturbative) reasoning of sections 3 and 4, this argument has the advantage that it applies to the general mixed case where

$$K = \sum_{a=1}^p \varphi_a \otimes \tilde{\varphi}_a + \sum_{b=1}^q \psi_b \otimes \tilde{\psi}_b. \quad (5.34)$$

6. Application to disordered scattering

As explained in section 2, the arrival of the superbosonization method made it possible, in principle, for the existing treatment of Gaussian ensembles by supersymmetry techniques to be extended to non-Gaussian ensembles. What was missing up to now was a good understanding of the large- N behavior of the characteristic function $\Omega(NK)$. Having developed such an understanding in the present paper, we are now in a position to go ahead with the investigation of non-Gaussian ensembles and, in particular, of questions of universality. A natural candidate for a first application of the new formalism would be the well-known universality hypothesis for the spectral correlations of U_N -invariant ensembles of $N \times N$ Hermitian random matrices in the large- N limit. This hypothesis, however, has already been discussed extensively in the literature and strong results have been obtained by other methods. We therefore refrain from

pursuing this issue here and, instead, turn to a problem which so far has been inaccessible: the question of universality in models of stochastic scattering.

To be concrete, we consider a standard scattering problem with M scattering channels coupled to an N -dimensional ‘internal’ space \mathbb{C}^N . We will use what is sometimes called the Heidelberg approximation to the scattering matrix:

$$S(E) = \text{Id}_M - 2iW^\dagger \frac{1}{E - H + iWW^\dagger} W. \quad (6.1)$$

Here H is the random matrix Hamiltonian acting in the internal space \mathbb{C}^N , the scalar parameter E is the scattering energy and $W \in \text{Hom}(\mathbb{C}^M, \mathbb{C}^N)$ is a coupling operator with Hermitian adjoint $W^\dagger \in \text{Hom}(\mathbb{C}^N, \mathbb{C}^M)$. Our interest is in the limit $N \rightarrow \infty$ with the number M of scattering channels kept fixed.

To be specific, we consider the correlation function of two elements of the scattering matrix (correlation functions of higher order can be treated in exactly the same way):

$$C_{ab,cd}(E_1, E_2) = \langle (S_{ab}(E_1) - \delta_{ab})(\overline{S_{cd}(E_2)} - \delta_{cd}) \rangle, \quad (6.2)$$

where the indices label scattering channels, and the angular brackets denote the expectation value w.r.t. to a probability measure μ_N which we take to be U_N -invariant but non-Gaussian. Since we eventually want to utilize the result (1.4), we require μ_N to be of the form (1.1) with analytic and uniformly convex V .

Let us note that the correlation function (6.2) cannot be expressed solely in terms of the eigenvalues of H or $H_{\text{eff}} := H - iWW^\dagger$. One does have an alternative expression

$$S(E) = \frac{\text{Id}_M - iK(E)}{\text{Id}_M + iK(E)}, \quad K(E) = W^\dagger(E - H)^{-1}W,$$

in terms of the Wigner-reaction matrix $K(E)$, but there exists no transparent relation between the distribution of eigenvalues of $K(E)$ and that of H . Therefore, one does not know how to use orthogonal polynomial techniques for the computation of (6.2).

Our method of choice is the supersymmetry method as reviewed in section 2. To launch it, we express the elements of the S -matrix as derivatives of a determinant:

$$S_{ab}(E) - \delta_{ab} = -2 \frac{\partial}{\partial X_{ba}} \ln \text{Det}(E - H + iW X W^\dagger) \Big|_{X=\text{Id}_M}. \quad (6.3)$$

For the complex conjugates $\overline{S_{cd}(E_2)} - \delta_{cd}$ in (6.2), we do the same and thus obtain the following expression for the correlation function:

$$C_{ab,cd}(E_1, E_2) = \frac{-4 \partial^2}{\partial X_{ba} \partial Y_{dc}} Z(X, Y) \Big|_{X=Y=\text{Id}_M}, \quad (6.4)$$

$$Z(X, Y) = \int \frac{\text{Det}(E_1 - H + iW X W^\dagger) \text{Det}(E_2 - H - iW Y W^\dagger)}{\text{Det}(E_1 - H + iW W^\dagger) \text{Det}(E_2 - H - iW W^\dagger)} d\mu_N(H).$$

While the integrand on the right-hand side differs from that of (2.22) by the presence of the $W W^\dagger$ terms, it is easy enough to incorporate these into the formalism. We get

$$Z(X, Y) = \int \Omega(K_1 + K_2) e^{-\text{Tr}(E_1 K_1 + E_2 K_2)} \times \exp(-i\langle \tilde{\varphi}_1, W W^\dagger \varphi_1 \rangle + i\langle \tilde{\psi}_1, W X W^\dagger \psi_1 \rangle + i\langle \tilde{\varphi}_2, W Y W^\dagger \varphi_2 \rangle - i\langle \tilde{\psi}_2, W W^\dagger \psi_2 \rangle), \quad (6.5)$$

where $K_j = \varphi_j \otimes \tilde{\varphi}_j + \psi_j \otimes \tilde{\psi}_j$ ($j = 1, 2$). The integral sign stands for the Berezin integral over the anti-commuting variables of $\psi_j, \tilde{\psi}_j$ as well as the ordinary integral (with Lebesgue measure) over $\varphi_j, \tilde{\varphi}_j$. The integration domain for the latter consists of two copies ($j = 1, 2$)

of $(\mathbb{C}^N)^* \times \mathbb{C}^N$ restricted to the real subspace \mathbb{C}^N which is given by $\tilde{\varphi}_1 = -i\varphi_1^\dagger$ and $\tilde{\varphi}_2 = +i\varphi_2^\dagger$, respectively.

We now take the derivatives $\partial/\partial X_{ba}$ and $\partial/\partial Y_{dc}$ at $X = Y = \text{Id}_M$. We also scale $K_j \rightarrow NK_j$. The expression for the correlation function then becomes

$$C_{ab,cd}(E_1, E_2) = \int \Omega(NK_1 + NK_2) e^{-N \text{Tr}(E_1 K_1 + E_2 K_2)} \quad (6.6)$$

$$\times 4N^2 e^{-N \text{Tr}(iK_1 - iK_2)WW^\dagger} \langle \tilde{\psi}_1, W_b \rangle \langle W_a^\dagger, \psi_1 \rangle \langle \tilde{\varphi}_2, W_d \rangle \langle W_c^\dagger, \varphi_2 \rangle. \quad (6.7)$$

At this stage, we would like to employ the superbosonization formula (2.27), using the large- N information about $\Omega(NK)$ from sections 3–5. However, this is not immediately possible, as the second line of (6.6) is not expressed by GL_N -invariants owing to the presence of W and W^\dagger . We therefore use a trick.

6.1. Averaging trick

The trick is to *enforce* invariance by making a substitution of integration variables (which has unit Jacobian)

$$\varphi_j \rightarrow g\varphi_j, \quad \psi_j \rightarrow g\psi_j, \quad \tilde{\varphi}_j \rightarrow \tilde{\varphi}_j g^{-1}, \quad \tilde{\psi}_j \rightarrow \tilde{\psi}_j g^{-1}. \quad (6.8)$$

and averaging over $g \in \text{U}_N$ with Haar measure to define the auxiliary quantity

$$D_{ab,cd}^{(N)} := 4N^2 \int_{\text{U}_N} e^{-N \text{Tr}(iK_1 - iK_2)g^{-1}WW^\dagger} \times \langle \tilde{\psi}_1 g^{-1}, W_b \rangle \langle W_a^\dagger, g\psi_1 \rangle \langle \tilde{\varphi}_2 g^{-1}, W_d \rangle \langle W_c^\dagger, g\varphi_2 \rangle dg. \quad (6.9)$$

Our next step is to compute the unitary matrix integral $D_{ab,cd}^{(N)}$ in the large- N limit. For this we use the following result: if $A, B \in \text{End}(\mathbb{C}^N)$ are operators whose rank is kept fixed (i.e. finite) in the limit $N \rightarrow \infty$, then

$$\int_{\text{U}_N} e^{-N \text{Tr}(A g B g^{-1})} dg \simeq \text{Det}^{-1}(\text{Id}_N \otimes \text{Id}_N + A \otimes B), \quad (6.10)$$

where ‘ \simeq ’ means equality in the large- N limit, with the right-hand side tending to the determinant of the Fredholm operator $\text{End}(\mathbb{C}^\infty) \ni X \mapsto X + AXB$. While this formula follows as a corollary of the relation between the integral $\int e^{-N \text{Tr}(A g B g^{-1})} dg$ and the R -transform [30], it can be obtained more directly by the observation that the matrix entries of g and $g^{-1} = g^\dagger$ (under the fixed rank condition on both A and B) become independent complex Gaussian random variables of variance N^{-1} in the large- N limit.

We now apply (6.10) to the present situation with $A = WW^\dagger$ and $B = i(K_1 - K_2)$:

$$\int_{\text{U}_N} e^{-N \text{Tr}(WW^\dagger g(iK_1 - iK_2)g^{-1})} dg \simeq \text{Det}^{-1}(\text{Id}_N \otimes \text{Id}_N + WW^\dagger \otimes i(K_1 - K_2)). \quad (6.11)$$

Then we switch from the determinant on $\mathbb{C}^N \otimes \mathbb{C}^N$ to a (super)-determinant on $\mathbb{C}^M \otimes \mathbb{C}^{2|2}$, using that W^\dagger and W exchange \mathbb{C}^N with \mathbb{C}^M , while the quadruples $\tilde{\varphi}_1, \tilde{\varphi}_2, \tilde{\psi}_1, \tilde{\psi}_2$ and $\varphi_1, \varphi_2, \psi_1, \psi_2$ exchange \mathbb{C}^N with the \mathbb{Z}_2 -graded vector space $\mathbb{C}^{2|2}$:

$$\lim_{N \rightarrow \infty} \int_{\text{U}_N} e^{-N \text{Tr}(WW^\dagger g(iK_1 - iK_2)g^{-1})} dg = \text{SDet}^{-1}(\text{Id}_M \otimes \text{Id}_{2|2} + W^\dagger W \otimes \text{is } Q). \quad (6.12)$$

Here $s = \text{diag}(1, -1, 1, -1)$ and Q denotes the supermatrix of GL_N -invariants

$$Q = \begin{pmatrix} \langle \tilde{\varphi}_1, \varphi_1 \rangle & \langle \tilde{\varphi}_1, \varphi_2 \rangle & \langle \tilde{\varphi}_1, \psi_1 \rangle & \langle \tilde{\varphi}_1, \psi_2 \rangle \\ \langle \tilde{\varphi}_2, \varphi_1 \rangle & \langle \tilde{\varphi}_2, \varphi_2 \rangle & \langle \tilde{\varphi}_2, \psi_1 \rangle & \langle \tilde{\varphi}_2, \psi_2 \rangle \\ \langle \tilde{\psi}_1, \varphi_1 \rangle & \langle \tilde{\psi}_1, \varphi_2 \rangle & \langle \tilde{\psi}_1, \psi_1 \rangle & \langle \tilde{\psi}_1, \psi_2 \rangle \\ \langle \tilde{\psi}_2, \varphi_1 \rangle & \langle \tilde{\psi}_2, \varphi_2 \rangle & \langle \tilde{\psi}_2, \psi_1 \rangle & \langle \tilde{\psi}_2, \psi_2 \rangle \end{pmatrix}. \quad (6.13)$$

Next, to account for the post-exponential factors in the integral (6.9), we introduce

$$f(Q) = (W^\dagger W \otimes Q) (\text{Id}_N \otimes \text{Id}_{2|2} + W^\dagger W \otimes \text{is } Q)^{-1}. \quad (6.14)$$

By a slight extension of (6.10) to include these factors, we have

$$\begin{aligned} \lim_{N \rightarrow \infty} D_{ab,cd}^{(N)} &= \text{SDet}^{-1}(\text{Id}_M \otimes \text{Id}_{2|2} + W^\dagger W \otimes \text{is } Q) \\ &\times 4 \left(f(Q)_{ab; \tilde{\psi}_1, \psi_1} f(Q)_{cd; \tilde{\psi}_2, \psi_2} + f(Q)_{cb; \tilde{\psi}_1, \psi_2} f(Q)_{ad; \tilde{\psi}_2, \psi_1} \right), \end{aligned} \quad (6.15)$$

where the first index pair indicates the position of the matrix entry in $\text{End}(\mathbb{C}^M)$, and the second pair indicates the one in $\text{End}(\mathbb{C}^{2|2})$. In the following, we write

$$\lim_{N \rightarrow \infty} D_{ab,cd}^{(N)} =: F_{ab,cd}(Q). \quad (6.16)$$

6.2. Superbosonization

Since the averaging trick has converted all dependence on φ, ψ of the integrand in (6.6) into an implicit dependence through the supermatrix Q of (6.13), we can now apply the superbosonization formula (2.27). In the superbosonization step, one forgets the expression (6.13) for the supermatrix Q and treats the matrix entries of Q as the new integration variables; at the same time, the integrand is ‘lifted’ to a function of Q .

To bring the result of superbosonization into a form suitable for the large- N saddle analysis of section 6.3, we write $\text{SDet}^N(Q) = e^{N \ln \text{SDet } Q} = e^{N \text{STr } \ln Q}$. With the same motivation, we write the lift $\widehat{\Omega}(NQ)$ of the characteristic function $\Omega(NK)$ of (5.21) as

$$\widehat{\Omega}(NQ) = e^{N \text{STr } \Phi(Q) + O(N^{-1})}, \quad \Phi(Q) = \sum_{n=1}^{\infty} \frac{c_n}{n} Q^n. \quad (6.17)$$

By sending N to infinity, we then obtain the exact result

$$\lim_{N \rightarrow \infty} C_{ab,cd}(z + \varepsilon/N, z - \varepsilon/N) = \lim_{N \rightarrow \infty} \int DQ e^{N \text{STr}(\ln Q + \Phi(Q) - zQ)} e^{-\varepsilon \text{STr}(sQ)} F_{ab,cd}(Q). \quad (6.18)$$

Here we used the fact (cf [17]) that the normalization constant in (2.27) has the value $c_{p,q} = 1$ for the present case of $p = q = 2$. The explicit expression for the invariant Berezin integration form DQ defined in (2.30) becomes

$$DQ = (2\pi)^{-4} \prod_{i,j=1}^2 dQ_{\tilde{\varphi}_i, \varphi_j} dQ_{\tilde{\psi}_i, \psi_j} \frac{\partial^2}{\partial Q_{\tilde{\varphi}_i, \psi_j} \partial Q_{\tilde{\psi}_i, \varphi_j}}. \quad (6.19)$$

We also observe that by (2.29), the $Q_{\tilde{\varphi}\varphi}$ -integral ranges over $(\text{is } Q)_{\tilde{\varphi}\varphi}^\dagger = (\text{is } Q)_{\tilde{\varphi}\varphi} > 0$, while the $Q_{\tilde{\psi}\psi}$ -integral ranges over U_2 .

One may ask why we keep $e^{-\varepsilon \text{STr}(sQ)} F_{ab,cd}(Q)$ but neglect $O(N^0)$ correction terms in $\ln \widehat{\Omega}(NQ)$ which appear to be of the same order. This question will be answered at the end of the next subsection.

6.3. Saddle approximation

In the limit $N \rightarrow \infty$, the dominant factor in the integral is $e^{N \text{STr}(\ln Q + \Phi(Q) - zQ)}$. Taking the first variation of the exponent gives the saddle-point equation

$$Q^{-1} + R(Q) = z \cdot \text{Id}_{2|2}, \quad R(Q) = \sum_{n=1}^{\infty} c_n Q^{n-1}. \quad (6.20)$$

This is Voiculescu’s equation (3.6), except that the role of the complex variable k is now taken by the supermatrix Q .

Let $z \in \mathbb{R}$ be inside the support of the large- N spectral measure of the random matrix H . Then we know that the equation $q^{-1} + R(q) = z$ for a scalar variable $q \in \mathbb{C}$ has two solutions, $q = g_+(z)$ and $q = g_-(z)$, with

$$\Re g_+(z) = \Re g_-(z), \quad \Im g_+(z) = -\Im g_-(z) < 0. \quad (6.21)$$

The following analysis is standard [22] and we therefore give only a sketch. We first look for diagonal matrices Q that solve the saddle-point equation (6.20). The condition is $Q_{\tilde{\varphi}\varphi} > 0$ selects

$$Q_{\tilde{\varphi}\varphi} = \text{diag}(g_+(z), g_-(z)). \quad (6.22)$$

(This is literally true if $\Re g_{\pm}(z) = 0$. When the real part is nonzero, a contour deformation is necessary in order to reach this saddle point.)

In the fermion–fermion sector (i.e. $Q_{\tilde{\psi}\psi}$), there are in principle four possible choices of diagonal saddle for $Q_{\tilde{\psi}\psi}$. Two of these, $(++)$ and $(--)$, do not contribute for $N \rightarrow \infty$ as they come with suppression factors $1/N$ due to fermionic Goldstone modes from breaking of supersymmetry. The remaining two choices, $(+-)$ and $(-+)$, are equivalent in the sense that they turn out to lie on the same orbit of the symmetry group. Thus, we select the diagonal saddle

$$Q_0 = \text{diag}(g_+(z), g_-(z), g_+(z), g_-(z)) = \Re g_+(z) \text{Id}_{2|2} + i \Im g_+(z) s. \quad (6.23)$$

The dominant part of the integrand is invariant under conjugation $Q \rightarrow T Q T^{-1}$ by elements T of the Lie supergroup $U_{1,1|2}$ [2]. The orbit generated by the action on Q_0 of this symmetry group is a supermanifold of saddle points

$$Q = T Q_0(z) T^{-1} = \Re g_+(z) \text{Id}_{2|2} + i \Im g_+(z) T s T^{-1}. \quad (6.24)$$

Evaluating the dominant part of the integrand along this manifold, we simply get unity:

$$e^{N \text{STr}(\ln Q + \Phi(Q) - z Q)}|_{Q=T Q_0(z) T^{-1}} = e^0 = 1. \quad (6.25)$$

Moreover, the integration over the Gaussian fluctuations normal to the saddle-point manifold also gives unity by supersymmetry. Hence, we have

$$\lim_{N \rightarrow \infty} C_{ab,cd}(z + \varepsilon/N, z - \varepsilon/N) = \int DT e^{-\varepsilon \text{STr}(s^T Q_0(z) T^{-1})} F_{ab,cd}(T Q_0(z) T^{-1}), \quad (6.26)$$

where DT denotes the $U_{1,1|2}$ -invariant Berezin integration form for the saddle-point supermanifold. This is the very same result which is obtained for the case of the Gaussian unitary ensemble in the limit $N \rightarrow \infty$. In this sense, the result is universal.

Let us summarize what are the agents of the mechanism leading to universality. First of all, the dominant factor $e^{N \text{STr}(\ln Q + \Phi(Q) - z Q)}$ of our integral is invariant under a Lie supergroup $U_{1,1|2}$. This symmetry group is determined by the type of correlation function under consideration and does not depend on the details of the probability measure μ_N . All saddle-point supermanifolds then are orbits of $U_{1,1|2}$.

Second, by the principle of maximal supersymmetry the large- N limit always selects the same type of orbit, $Q = T Q_0(z) T^{-1}$, as long as z lies in the bulk of the spectrum. (At the edges of the spectrum, the orbit degenerates by the vanishing of $\Delta := \mp \Im g_{\pm}(z)$.) The specific details of the probability measure μ_N enter only via the scale factor Δ .

Third, the correlation function is obtained by restricting the (non-invariant part of the) integrand to the orbit $Q = T Q_0(z) T^{-1}$ and integrating along it. The scale factor Δ is needed in order to express the energy dependence of the correlation function in the proper units given by the mean level spacing. At the same time, the ‘scattering observable’ $F_{ab,cd}(T Q_0(z) T^{-1})$ is expressed in terms of the average S -matrix and physical quantities called ‘sticking probabilities’

or transmission factors [22]. When this is done, the correlation function assumes its universal form.

Let us finally give the reason why it was legitimate to neglect the $O(N^0)$ corrections to $\ln \widehat{\Omega}(NQ)$. Any such correction is $U_{1,1|2}$ -invariant and, in fact, vanishes along the dominant saddle-point supermanifold. Its only effect is to cause a slight perturbation of the scale of this supermanifold and correct the density of states by a term of order $1/N$. This effect is negligible in the large- N limit.

7. Summary and outlook

In this paper, we employed a variety of techniques to study the characteristic function $\Omega(NK)$ and its lift $\widehat{\Omega}(NQ)$, which are key to a recent variant of the supersymmetry method, i.e. the Wegner–Efetov technique of integration over commuting and anti-commuting variables. What we found is that the large- N asymptotics of $\widehat{\Omega}(NQ)$ for any unitary ensemble ‘close to Gaussian’ is determined by the R -transform known from free probability theory. (More precisely, we made the assumption that the confining potential for the random matrix eigenvalues is uniformly convex and analytic, in which case the R -transform is an entire function.) The task of computing correlation functions then reduces to a discussion centered around supermanifolds which are given as solution spaces of Voiculescu’s equation (1.10) extended to the case of a supermatrix Q .

This insight opens the door to numerous applications which in the past had been beyond the reach of the supersymmetry method. In the present paper, we have given a first application to stochastic scattering, demonstrating the universality of S -matrix correlations for the case of unitary ensembles close to Gaussian. Future applications of the method will be aimed at more demanding situations with two or more cuts (i.e. with a density of states supported on several disjoint intervals) and double scaling limits at critical points. To make progress with such far-from-Gaussian problems, we first have to learn how to deal with singularities that develop in the R -transform.

We stress that although our paper deals exclusively with unitary ensembles, the methods used are robust and do extend to ensembles of different symmetry type.

Let us finish with a quick glance at a new and exciting development. In a long series of papers by Erdős *et al* [11–14, 21], sine-kernel (or GUE) universality of spectral correlations has recently been established for the case of Hermitian *Wigner* matrices, i.e. random matrices with statistically independent entries. Using these results as input to the present formalism, we may now address the wider class of random matrices given as the sum of a Wigner matrix and a unitary ensemble. Indeed, the characteristic function of such a random matrix is a product $\Omega = \Omega_{\text{Wigner}} \times \Omega_{\text{unitary}}$. In the present paper, we developed a large- N theory of the second factor, while the results of Erdős *et al* give control of the first factor; more precisely, $\widehat{\Omega}_{\text{Wigner}}(NQ)$ approaches $\widehat{\Omega}_{\text{GUE}}(NQ)$ with a rate of convergence which is sufficiently fast in order for sine-kernel universality to emerge. Moreover, because the sum of a Wigner matrix and a unitary ensemble is a sum of free random variables, the R -transform of the sum is the sum of the individual R -transforms. This offers a good prospect of obtaining analytical control of the more general situation.

Acknowledgments

MRZ acknowledges a helpful discussion with A Guionnet. This work was financially supported by the Deutsche Forschungsgemeinschaft (SFB/TR 12).

Note added. The large- N hypothesis (5.13) with c_n equal to the n th free cumulant is essentially equivalent to theorem 2.6 of Collins *et al* [7]. (We thank a referee for alerting us to that result.)

References

- [1] Baik J, Deift P and Strahov E 2003 Products and ratios of characteristic polynomials of random Hermitian matrices *J. Math. Phys.* **44** 3657
- [2] Berezin F A 1987 *Introduction to Superanalysis* (Dordrecht: Reidel)
- [3] Berline M, Getzler E and Vergne M 1992 *Heat Kernels and Dirac Operators* (Berlin: Springer)
- [4] Brezin E, Itzykson C, Parisi G and Zuber J B 1978 Planar diagrams *Commun. Math. Phys.* **69** 35
- [5] Bump D 2004 *Lie Groups Graduate Texts in Mathematics* vol 225 (Berlin: Springer)
- [6] Collins B 2003 Moments and cumulants of polynomial random variables on unitary groups: the Itzykson–Zuber integral and free probability *Int. Math. Res. Not.* **17** 953
- [7] Collins B, Mingo J A, Śniady P and Speicher R 2007 Second order freeness and asymptotics of random matrices: III. Higher order freeness and free cumulants *Documenta Math.* **12** 1
- [8] Deift P 2000 *Orthogonal Polynomials and Random Matrices: A Riemann–Hilbert Approach* (Courant Lecture Notes) (New York: American Mathematical Society)
- [9] Deift P, Kriecherbauer T, McLaughlin K T R, Venakides S and Zhou X 1999 Uniform asymptotics for polynomials orthogonal with respect to varying exponential weights and applications to universality questions in random matrix theory *Commun. Pure Appl. Math.* **52** 1335
- [10] Efetov K B 1983 Supersymmetry and theory of disordered metals *Adv. Phys.* **32** 127
- [11] Erdos L, Ramirez J, Schlein B and Yau H-T 2009 Universality of sine kernel for Wigner matrices with a small Gaussian perturbation arXiv:0905.2089
- [12] Erdos L, Ramirez J, Schlein B and Yau H-T 2009 Bulk universality for Wigner matrices arXiv:0905.4176
- [13] Erdos L, Ramirez J, Schlein B, Tao T, Vu V and Yau J-T 2009 Bulk universality of Wigner hermitian matrices with subexponential decay arXiv:0906.4400
- [14] Erdos L, Schlein B and Yau H-T 2009 Universality of random matrices and local relaxation flow arXiv:0907.5605
- [15] Guionnet A and Maida M 2005 A Fourier view on the R -transform and related asymptotics of spherical integrals *J. Funct. Anal.* **222** 435
- [16] Howe R 1989 Remarks on classical invariant theory *Trans. Am. Math. Soc.* **313** 539
- [17] Littellmann P, Sommers H-J and Zirnbauer MR 2008 Superbosonization of invariant random matrix ensembles *Commun. Math. Phys.* **283** 343
- [18] Lueck T, Sommers H-J and Zirnbauer MR 2006 Energy correlations for a random matrix model of disordered bosons *J. Math. Phys.* **47** 103304
- [19] Speicher R 1994 Multiplicative functions on the lattice of noncrossing partitions and free convolution *Math. Ann.* **298** 611
- [20] Szegő G 1975 *Orthogonal Polynomials* (American Mathematical Society, *Colloquium Publications* vol 23) 4th edn (Providence, RI: American Mathematical Society)
- [21] Tao T and Vu V 2009 Random matrices: universality of local eigenvalue statistics arXiv:0906.0510
- [22] Verbaarschot JJM, Weidenmüller HA and Zirnbauer MR 1985 Grassmann variables in stochastic quantum physics: the case of compound-nucleus scattering *Phys. Rep.* **129** 367
- [23] Voiculescu D 1986 Addition of certain non-commuting random variables *J. Funct. Anal.* **66** 323
- [24] Voiculescu D 1991 Limit laws for random matrices and free products *Invent. Math.* **104** 201
- [25] Voiculescu D, Dykema KJ and Nica A 1992 *Free Random Variables (CRM Monograph Series)* (American Mathematical Society)
- [26] Wegner F 1979 The mobility edge problem: continuous symmetry and a conjecture *Z. Phys. B* **35** 207
- [27] Weyl H 1939 *The Classical Groups* (Princeton: Princeton University Press)
- [28] Zee A 1996 Law of addition in random matrix theory *Nucl. Phys. B* **474** 726
- [29] Zinn-Justin P 1998 Universality of correlation functions of Hermitian random matrices in an external field *Commun. Math. Phys.* **104** 631
- [30] Zinn-Justin P 1999 Adding and multiplying random matrices: generalization of Voiculescu’s formulas *Phys. Rev. E* **59** 4884